

# User Manual

Revision 1.001  
English

## OPC UA Client / BACnet Slave - Converter

(Order Code: HD67B11-B2)

for Website information:

<http://www.adfweb.com/?Product=HD67B11>

for Price information:

<http://www.adfweb.com/?Price=HD67B11-B2>

### Benefits and Main Features:

- ✚ Triple electrical isolation
- ✚ Power Supply 18...35V DC and 8...24 V AC
- ✚ Temperature range: -40°C/+85°C (-40°F/+185°F)



For others OPC UA Client devices, see also the following links:

#### OPC UA Client from/to ...

<a href="http://www.adfweb.com?Product=HD67B08">www.adfweb.com?Product=HD67B08</a>	(Serial)
<a href="http://www.adfweb.com?Product=HD67B09">www.adfweb.com?Product=HD67B09</a>	(Modbus Slave)
<a href="http://www.adfweb.com?Product=HD67B10">www.adfweb.com?Product=HD67B10</a>	(Modbus TCP Slave)
<a href="http://www.adfweb.com?Product=HD67B12">www.adfweb.com?Product=HD67B12</a>	(CAN)
<a href="http://www.adfweb.com?Product=HD67B13">www.adfweb.com?Product=HD67B13</a>	(CANopen)
<a href="http://www.adfweb.com?Product=HD67B14">www.adfweb.com?Product=HD67B14</a>	(DeviceNet Slave)
<a href="http://www.adfweb.com?Product=HD67B15">www.adfweb.com?Product=HD67B15</a>	(DMX)
<a href="http://www.adfweb.com?Product=HD67B16">www.adfweb.com?Product=HD67B16</a>	(Ethernet/IP Slave)
<a href="http://www.adfweb.com?Product=HD67B17">www.adfweb.com?Product=HD67B17</a>	(J1939)
<a href="http://www.adfweb.com?Product=HD67B18">www.adfweb.com?Product=HD67B18</a>	(KNX)
<a href="http://www.adfweb.com?Product=HD67B19">www.adfweb.com?Product=HD67B19</a>	(MQTT)
<a href="http://www.adfweb.com?Product=HD67B20">www.adfweb.com?Product=HD67B20</a>	(NMEA0183)
<a href="http://www.adfweb.com?Product=HD67B21">www.adfweb.com?Product=HD67B21</a>	(NMEA2000)
<a href="http://www.adfweb.com?Product=HD67B22">www.adfweb.com?Product=HD67B22</a>	(PROFINET)
<a href="http://www.adfweb.com?Product=HD67B23">www.adfweb.com?Product=HD67B23</a>	(SNMP Agent)

Do you have an your customer protocol?

See the following links:

[www.adfweb.com?Product=HD67003](http://www.adfweb.com?Product=HD67003)

Do you need to choose a device? do you want help?

Ask it to the following link:

[www.adfweb.com?Cmd=helpme](http://www.adfweb.com?Cmd=helpme)



User Manual

## INDEX:

	Page
INDEX	2
UPDATED DOCUMENTATION	2
REVISION LIST	2
WARNING	2
TRADEMARKS	2
SECURITY ALERT	3
EXAMPLE OF CONNECTION	4
CONNECTION SCHEME	5
CHARACTERISTICS	7
CONFIGURATION	7
POWER SUPPLY	8
FUNCTION MODES	9
LEDS	10
RS485 (FOR BACNET MS/TP)	11
ETHERNET	12
USE OF COMPOSITOR SW67B11	13
NEW PROJECT / OPEN PROJECT	14
SOFTWARE OPTIONS	15
SET COMMUNICATION	17
OPC UA ACCESS	20
SET BACNET ACCESS	26
UPDATE DEVICE	28
MECHANICAL DIMENSIONS	30
ORDERING INFORMATIONS	31
ACCESSORIES	31
DISCLAIMER	32
OTHER REGULATIONS AND STANDARDS	32
WARRANTIES AND TECHNICAL SUPPORT	33
RETURN POLICY	33

## UPDATED DOCUMENTATION:

Dear customer, we thank you for your attention and we remind you that you need to check that the following document is:

- ✦ Updated
- ✦ Related to the product you own

To obtain the most recently updated document, note the “document code” that appears at the top right-hand corner of each page of this document.

With this “Document Code” go to web page [www.adfweb.com/download/](http://www.adfweb.com/download/) and search for the corresponding code on the page. Click on the proper “Document Code” and download the updates.

## REVISION LIST:

Revision	Date	Author	Chapter	Description
1.000	13/03/2019	Nv	All	First release version
1.001	11/10/2019	Ff	All	Revision

## WARNING:

ADFweb.com reserves the right to change information in this manual about our product without warning.

ADFweb.com is not responsible for any error this manual may contain.

## TRADEMARKS:

All trademarks mentioned in this document belong to their respective owners.

**SECURITY ALERT:****GENERAL INFORMATION**

To ensure safe operation, the device must be operated according to the instructions in the manual. When using the device, legal and safety regulation are required for each individual application. The same applies also when using accessories.

**INTENDED USE**

Machines and systems must be designed so the faulty conditions do not lead to a dangerous situation for the operator (i.e. independent limit switches, mechanical interlocks, etc.).

**QUALIFIED PERSONNEL**

The device can be used only by qualified personnel, strictly in accordance with the specifications. Qualified personnel are persons who are familiar with the installation, assembly, commissioning and operation of this equipment and who have appropriate qualifications for their job.

**RESIDUAL RISKS**

The device is state-of-the-art and is safe. The instruments can represent a potential hazard if they are inappropriately installed and operated by untrained personnel. These instructions refer to residual risks with the following symbol:

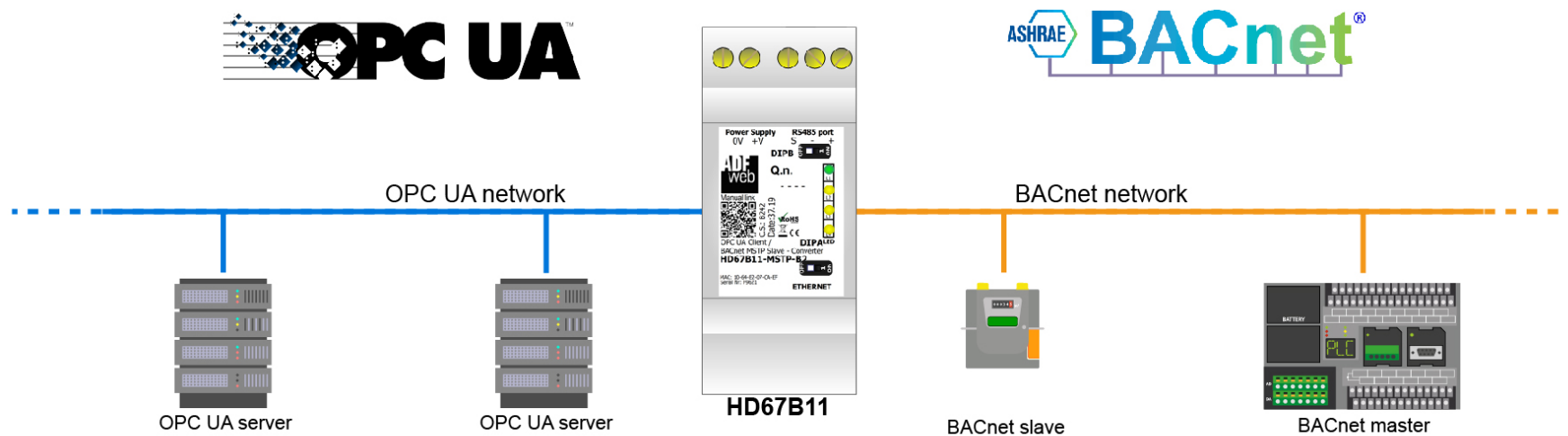


This symbol indicates that non-observance of the safety instructions is a danger for people that could lead to serious injury or death and / or the possibility of damage.

**CE CONFORMITY**

The declaration is made by our company. You can send an email to [support@adfweb.com](mailto:support@adfweb.com) or give us a call if you need it.

**EXAMPLE OF CONNECTION:**



**ADF**  
web **ADFweb.com srl**  
Tel. +39 0438 309 131 - Fax +39 0438 492 099  
info@adfweb-com - www.adfweb.com

## CONNECTION SCHEME:

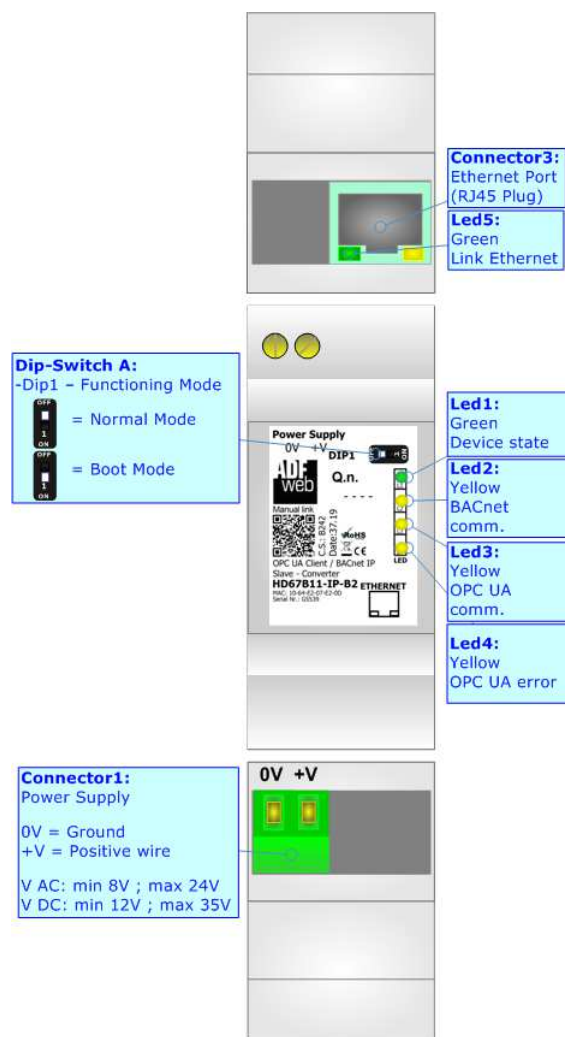


Figure 1a: Connection scheme for HD67B11-IP-B2

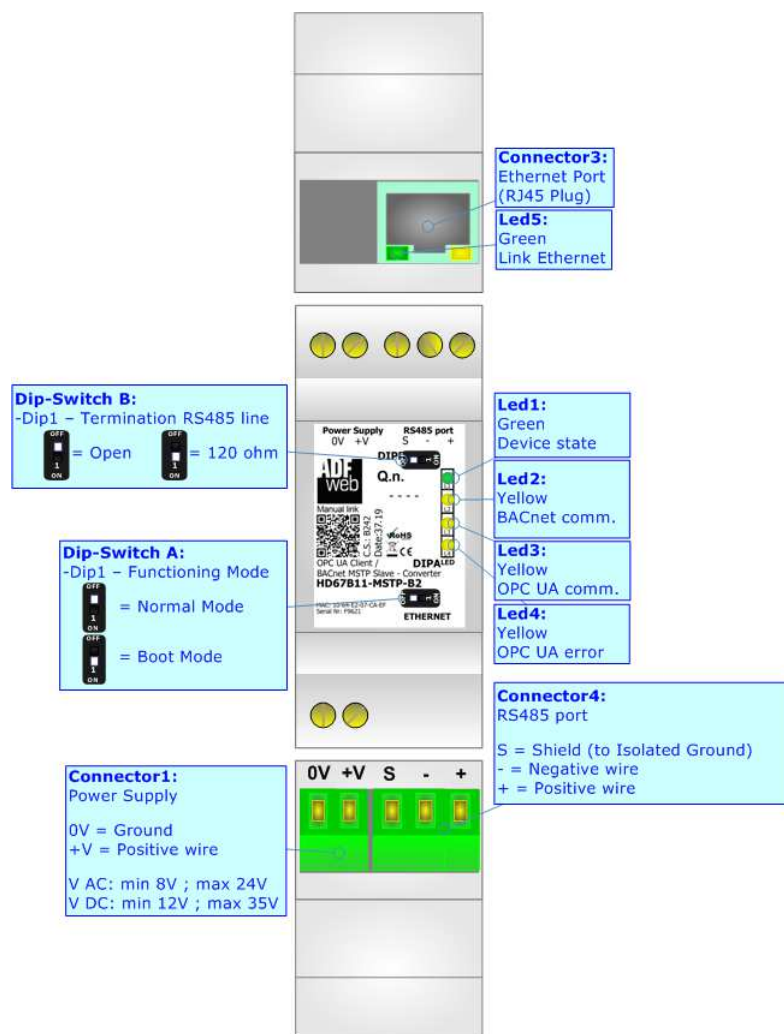


Figure 1b: Connection scheme for HD67B11-MSTP-B2

**CHARACTERISTICS:**

The HD67B11-B2 is a OPC UA Client / BACnet Slave converter.

It allows the following characteristics:

- Up to 1500 bytes in reading and 1500 bytes in writing;
- Two-directional information between BACnet and OPC UA;
- Mountable on 35mm Rail DIN;
- Wide power supply input range: 8...24V AC or 12...35V DC;
- Wide temperature range: -40°C / 85°C [-40°F / +185°F].



**CONFIGURATION:**

You need Compositor SW67B11 software on your PC in order to perform the following:

- Define the parameter of OPC UA;
- Define the parameter of BACnet line;
- Define the list of OPC UA servers connected to the converter;
- Define the list of BACnet objects accessible on BACnet side;
- Update the device.

## POWER SUPPLY:

The devices can be powered between a wide range of tensions. For more details see the two tables below.

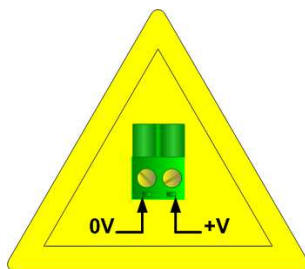
	VAC 		VDC 	
	Vmin	Vmax	Vmin	Vmax
HD67B11-B2	8V	24V	12V	35V

Consumption at 24V DC:

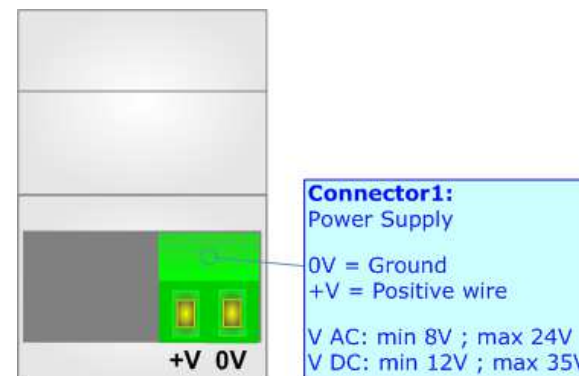
Device	W/VA
HD67B11-B2	4



**Caution: Not reverse the polarity power**



HD67B11-xxx-B2





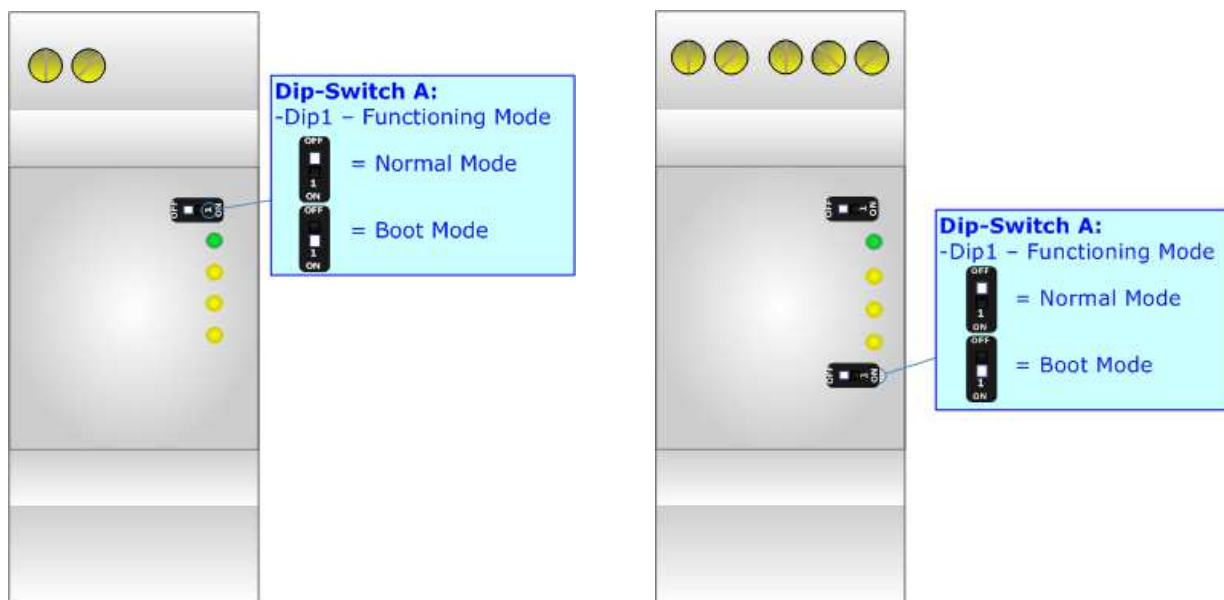
**FUNCTION MODES:**

The device has got two functions mode depending of the position of the Dip1 of 'Dip-Switch A':

- The first, with Dip1 in Off position (factory setting), is used for the normal working of the device.
- The second, with Dip1 in On position, is used for upload the Project/Firmware.

For the operations to follow for the updating (see 'UPDATE DEVICE' section).

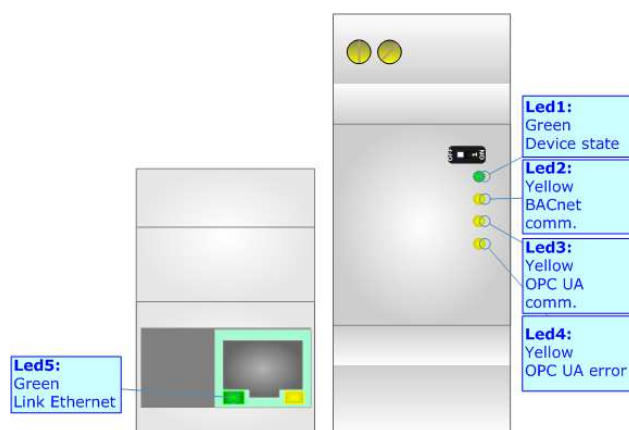
According to the functioning mode, the LEDs will have specifics functions (see 'LEDS' section).



## LEDS:

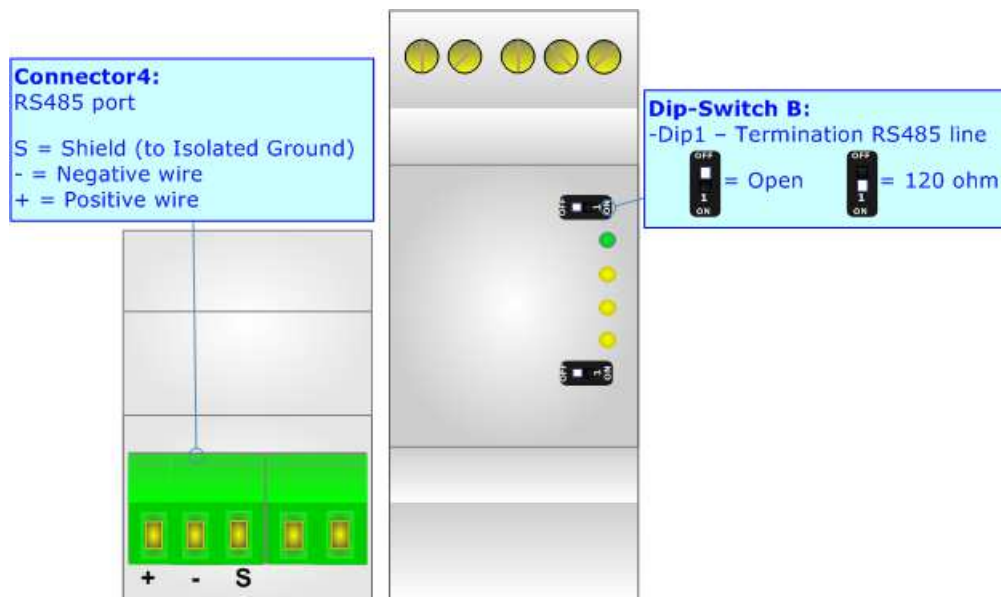
The device has got five LEDs that are used to give information of the functioning status.  
The various meanings of the LEDs are described in the table below.

LED	Normal Mode	Boot Mode
1: Device State (green)	Blinks slowly ( $\sim 1\text{Hz}$ )	<b>Blinks quickly:</b> Boot state <b>Blinks very slowly (<math>\sim 0.5\text{Hz}</math>):</b> update in progress
2: BACnet comm. (yellow)	<b>Flashing:</b> BACnet request <b>OFF:</b> No BACnet request	<b>Blinks quickly:</b> Boot state <b>Blinks very slowly (<math>\sim 0.5\text{Hz}</math>):</b> update in progress
3: OPC UA comm. (yellow)	<b>Flashing:</b> OPC UA response <b>OFF:</b> No OPC UA response	<b>Blinks quickly:</b> Boot state <b>Blinks very slowly (<math>\sim 0.5\text{Hz}</math>):</b> update in progress
4: OPC UA error (yellow)	<b>ON:</b> At least one OPC UA Server is disconnected <b>OFF:</b> all OPC UA Servers are connected	<b>Blinks quickly:</b> Boot state <b>Blinks very slowly (<math>\sim 0.5\text{Hz}</math>):</b> update in progress
5: Link Ethernet (green)	<b>ON:</b> Ethernet cable connected <b>OFF:</b> Ethernet cable disconnected	<b>ON:</b> Ethernet cable connected <b>OFF:</b> Ethernet cable disconnected



### RS485 (for BACnet MS/TP):

For terminating the RS485 line with a 120Ω resistor it is necessary to put ON dip 1, like in figure.



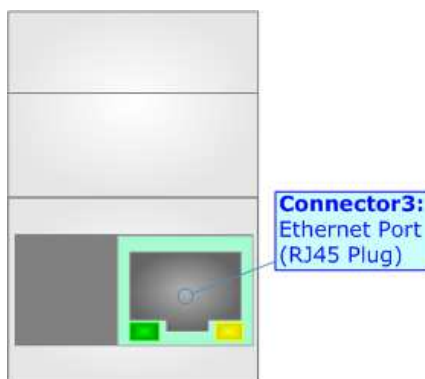
The maximum length of the cable should be 1200m (4000 feet).

Here some codes of cables:

- Belden: p/n 8132 - 2x 28AWG stranded twisted pairs conductor + foil shield + braid shield;
- Belden p/n 82842 - 2x 24AWG stranded twisted pairs conductor + foil shield + braid shield;
- Tasker: p/n C521 - 1x 24AWG twisted pair conductor + foil shield + braid shield;
- Tasker: p/n C522 - 2x 24AWG twisted pairs conductor + foil shield + braid shield.

**ETHERNET:**

The Ethernet connection must be made using Connector3 of HD67B11-xxx-B2 with at least a Category 5E cable. The maximum length of the cable should not exceed 100m. The cable has to conform to the T568 norms relative to connections in cat.5 up to 100 Mbps. To connect the device to an Hub/Switch is recommended the use of a straight cable, to connect the device to a PC/PLC/other is recommended the use of a cross cable.



## USE OF COMPOSITOR SW67B11:

To configure the Converter, use the available software that runs with Windows called SW67B11. It is downloadable on the site [www.adfweb.com](http://www.adfweb.com) and its operation is described in this document. *(This manual is referenced to the last version of the software present on our web site)*. The software works with MSWindows (XP, Vista, Seven, 8, 10; 32/64bit).

When launching the SW67B11, the window below appears (Fig. 2).



### Note:

It is necessary to have installed .Net Framework 4.

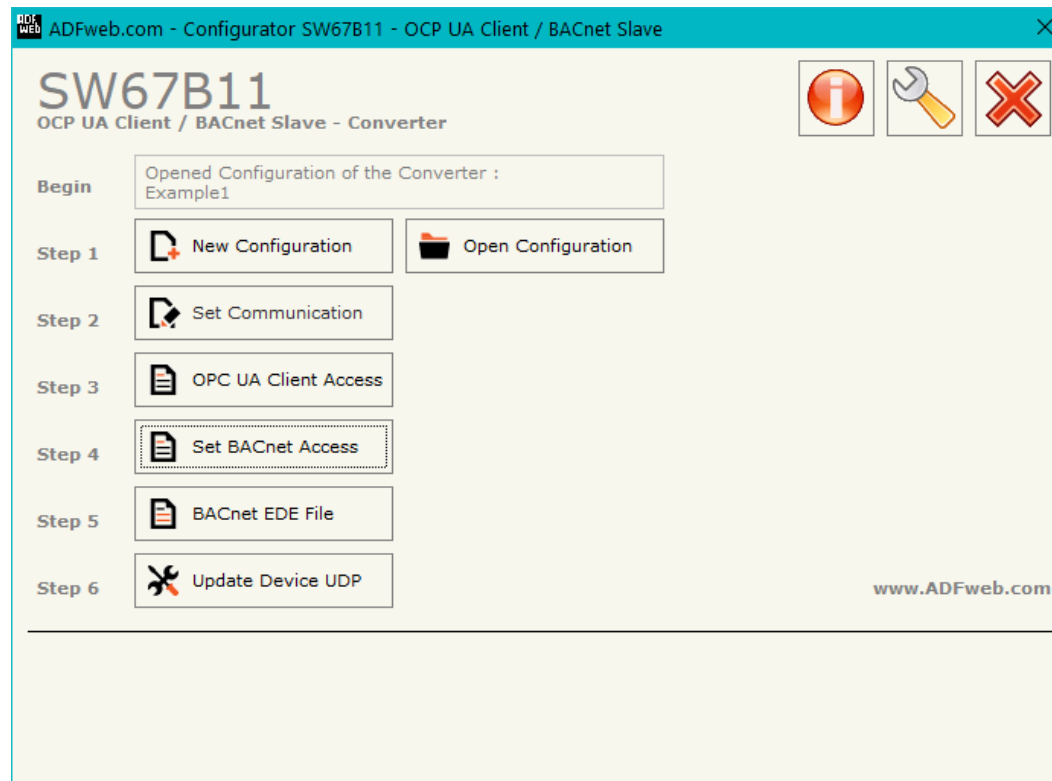
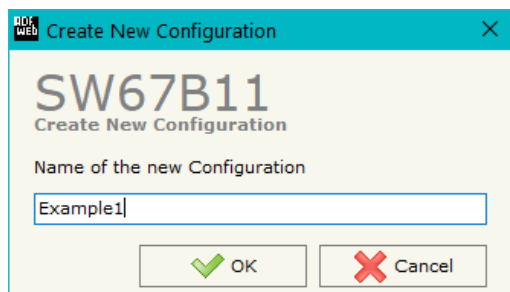


Figure 2: Main window for SW67B11

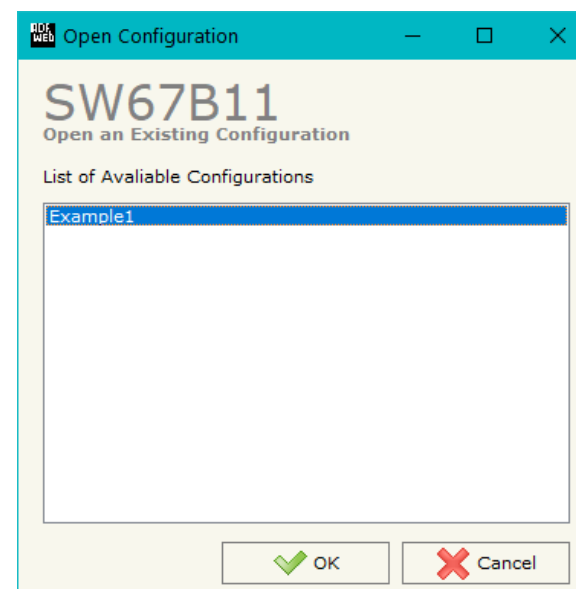
**NEW CONFIGURATION / OPEN CONFIGURATION:**

The “**New Configuration**” button creates the folder which contains the entire device’s configuration.




A device’s configuration can also be imported or exported:

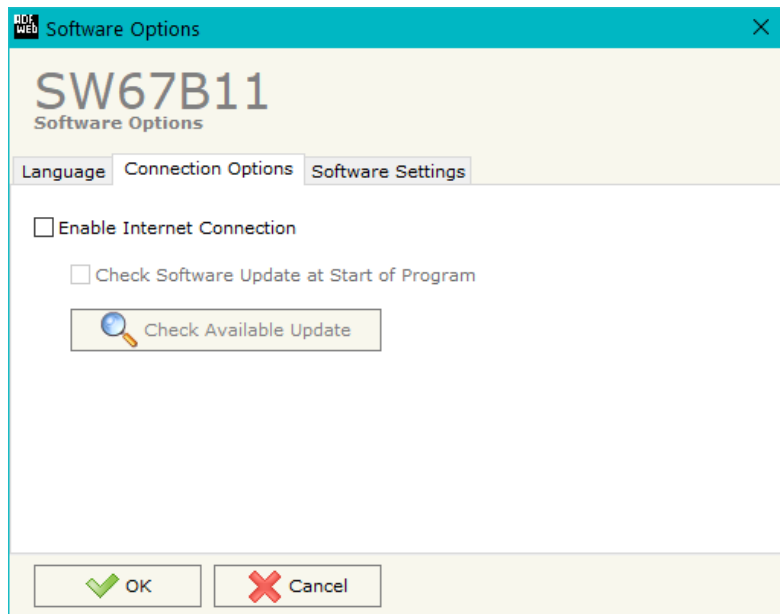
- To clone the configurations of a programmable “OPC UA Client / BACnet Slave - Converter” in order to configure another device in the same manner, it is necessary to maintain the folder and all its contents;
- To clone a project in order to obtain a different version of the project, it is sufficient to duplicate the project folder with another name and open the new folder with the button “**Open Configuration**”.



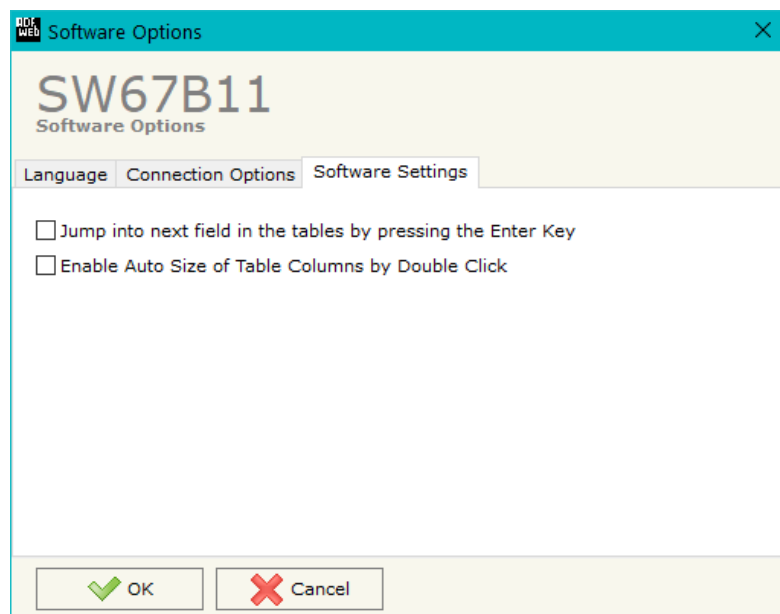
## SOFTWARE OPTIONS:

By pressing the “**Settings**” () button there is the possibility to change the language of the software and check the updatings for the compositor.

In the section “Language” it is possible to change the language of the software.



In the section “Connection Options”, it is possible to check if there are some updatings of the software compositor in ADFweb.com website. Checking the option “**Check Software Update at Start of Program**”, the SW67B11 check automatically if there are updatings when it is launched.



In the section "Software Settings", it is possible to enable/disable some keyboard's commands for an easier navigation inside the tables contained in the different sections of the software.



## SET COMMUNICATION:

This section define the fundamental communication parameters of two buses, OPC UA Client and Modbus TCP.

By Pressing the “**Set Communication**” button from the main window for SW67B11 (Fig. 2) the window “Set Communication” appears (Fig. 3a).

The window is divided in three sections in order to define the different parameters of the converter:

- OPC UA Client
- BACnet Slave
- NTP (Network Time Protocol)

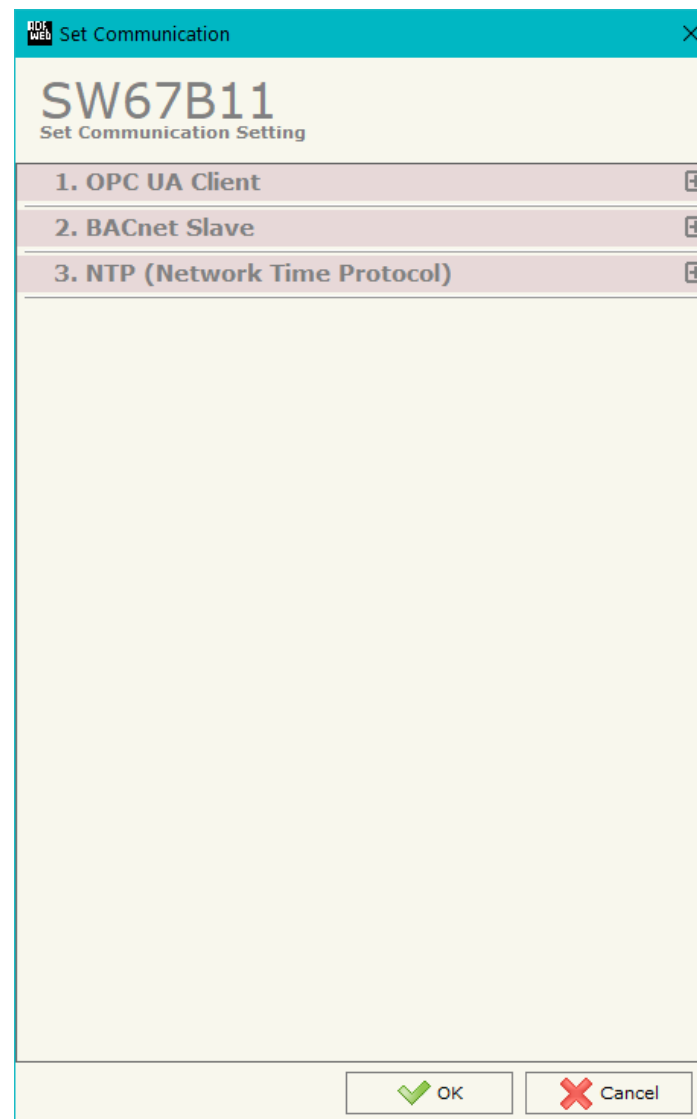


Figure 3a: “Set Communication” window

**OPC UA CLIENT:**

The means of the fields for "OPC UA Client" are:

- In the fields "**IP Address**" the IP address for OPC UA side of the converter is defined;
- In the fields "**SubNet Mask**" the SubNet Mask for OPC UA side of the converter is defined;
- In the fields "**Gateway**" the default gateway of the net is defined. This feature can be enabled or disabled pressing the Check Box field. This feature is used for going out of the net;
- In the field "**DNS**" the IP Address of the DNS server is defined. This feature can be enabled or disabled pressing the Check Box field.

**BACNET SLAVE (FOR BACNET/IP):**

This section is used to define the main parameters of BACnet/IP line. The means of the fields are:

- the fields "**IP ADDRESS**" the IP address of BACnet/IP side of the converter is defined;
- In the fields "**SUBNET Mask**" the SubNet Mask of BACnet/IP side of the converter is defined;
- In the fields "**GATEWAY**" the default gateway of the network is defined. This feature can be enabled or disabled pressing the Check Box field. This feature is used for going out of the net;
- In the field "**Port**" the port used for BACnet communication is defined. The default port used for BACnet communication is 47808, but is possible to insert any value;
- In the field "**BACnet Device Name**" the name of BACnet/IP side of the converter is defined;
- In the field "**Device Identifier**" the ID of BACnet/IP side of the converter is defined;
- If the field "**BACnet description up to 32 chars**" is checked, the description of the BACnet objects can be up to 32 chars.

1. OPC UA Client				
IP Address	192	168	0	5
SubNet Mask	255	255	255	0
<input type="checkbox"/> Gateway	192	168	0	1
<input type="checkbox"/> DNS	8	8	8	8

Figure 3b: "Set Communication → OPC UA Client" window

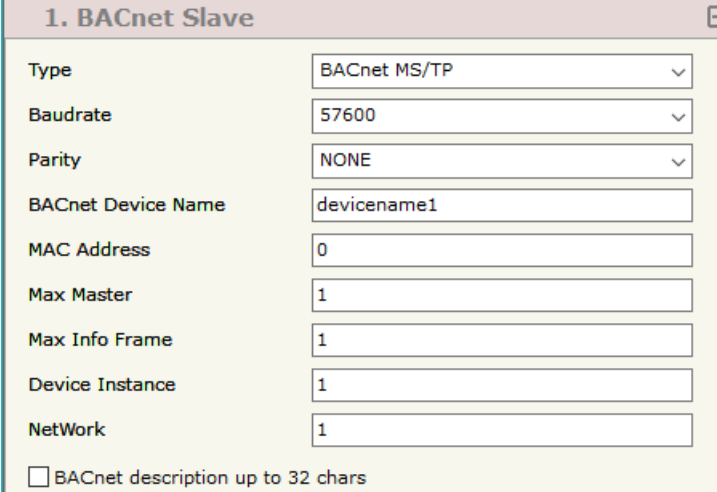
1. BACnet Slave	
Type	BACnet/IP
IP Address	192 . 168 . 0 . 5
SubNet Mask	255 . 255 . 255 . 0
<input type="checkbox"/> Gateway	192 . 168 . 0 . 1
Port	47808
BACnet Device Name	devicename1
Device Identifier	1
<input type="checkbox"/> BACnet description up to 32 chars	

Figure 3c: "Set Communication → BACnet Slave" window

**BACNET SLAVE (FOR BACNET MS/TP):**

This section is used to define the main parameters of BACnet MS/TP line. The means of the fields are:

- In the field "**Baudrate**" the data rate of the BACnet line is defined;
- In the field "**Parity**" the parity of the line is defined;
- In the field "**BACnet Device Name**" the name to give to the BACnet node is defined;
- In the field "**MAC Address**" the MAC of BACnet node (from 0 to 254) is defined;
- The field "**Max Master**" specifies the highest allowable address for master nodes. The value shall be less than or equal to 127;
- The field "**Max Info Frames**" specifies the maximum number of information frames the node may send before it must pass the token;
- In the field "**Device Instance**" the of the BACnet MS/TP side of the converter is defined;
- In the field "**Network**" the BACnet MS/TP network number is defined;
- If the field "**BACnet description up to 32 chars**" is checked, the description of the BACnet objects can be up to 32 chars.




1. BACnet Slave	
Type	BACnet MS/TP
Baudrate	57600
Parity	NONE
BACnet Device Name	devicename1
MAC Address	0
Max Master	1
Max Info Frame	1
Device Instance	1
NetWork	1
<input type="checkbox"/> BACnet description up to 32 chars	

Figure 3d: "Set Communication → BACnet Slave" window

**NTP (NETWORK TIME PROTOCOL)**

This section is used to define the parameters of NTP protocol. The means of the fields are:

- In the field "**Server URL**" the URL or the IP Address of the NTP Server is defined;
- In the field "**Poll Time (seconds)**" the polling time for the time synchronization is defined.



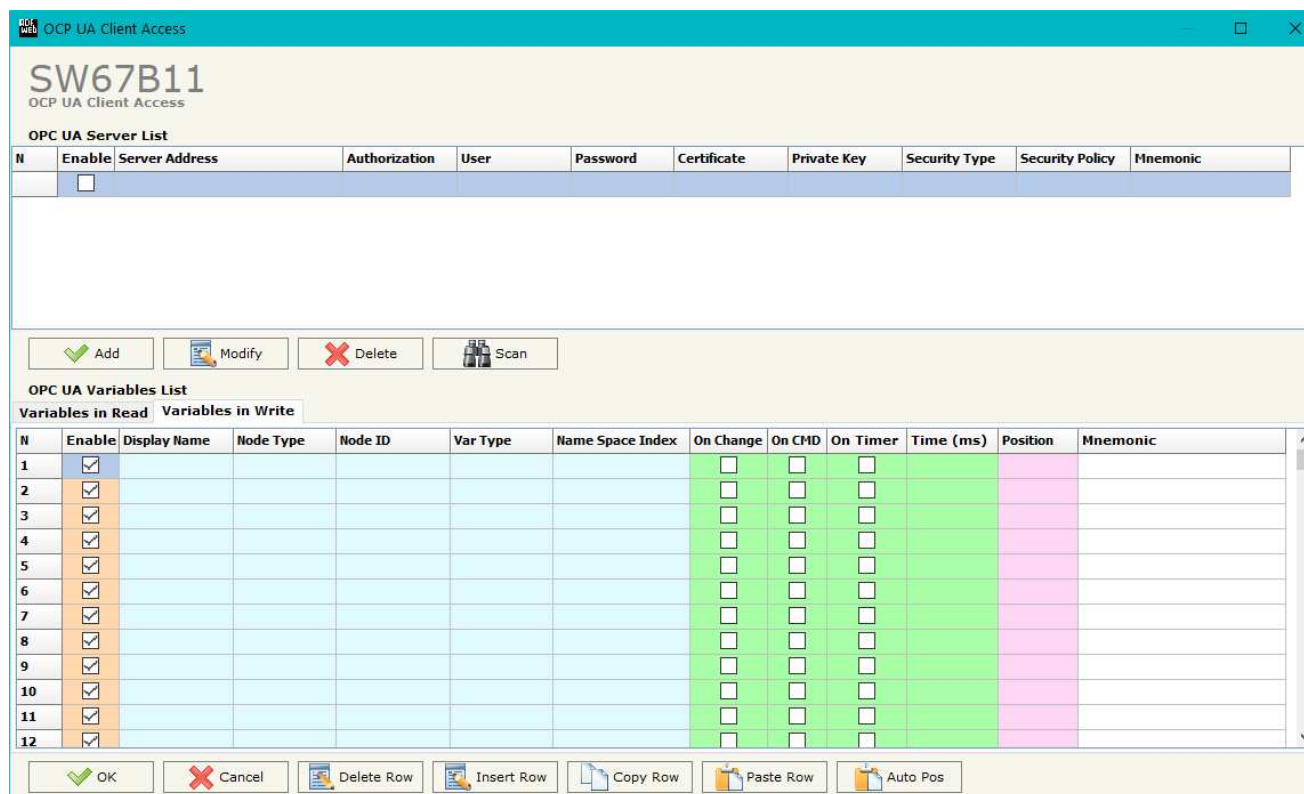
3. NTP (Network Time Protocol)	
Server URL	0.it.pool.ntp.org
Poll Time (seconds)	10000

Figure 3e: "Set Communication → NTP (Network Time Protocol)" window

## OPC UA ACCESS:

By Pressing the “**OPC UA Client Access**” button from the main window for SW67B11 (Fig. 2) the window “OPC UA Client Access” appears (Fig. 4).

This section is used to define the list of the OPC UA Servers to read/write with the OPC UA Client.



**OPC UA Server List**

N	Enable	Server Address	Authorization	User	Password	Certificate	Private Key	Security Type	Security Policy	Mnemonic
1	<input type="checkbox"/>									

**OPC UA Variables List**

Variables in Read Variables in Write

N	Enable	Display Name	Node Type	Node ID	Var Type	Name Space Index	On Change	On CMD	On Timer	Time (ms)	Position	Mnemonic
1	<input checked="" type="checkbox"/>						<input type="checkbox"/>	<input type="checkbox"/>	<input type="checkbox"/>			
2	<input checked="" type="checkbox"/>						<input type="checkbox"/>	<input type="checkbox"/>	<input type="checkbox"/>			
3	<input checked="" type="checkbox"/>						<input type="checkbox"/>	<input type="checkbox"/>	<input type="checkbox"/>			
4	<input checked="" type="checkbox"/>						<input type="checkbox"/>	<input type="checkbox"/>	<input type="checkbox"/>			
5	<input checked="" type="checkbox"/>						<input type="checkbox"/>	<input type="checkbox"/>	<input type="checkbox"/>			
6	<input checked="" type="checkbox"/>						<input type="checkbox"/>	<input type="checkbox"/>	<input type="checkbox"/>			
7	<input checked="" type="checkbox"/>						<input type="checkbox"/>	<input type="checkbox"/>	<input type="checkbox"/>			
8	<input checked="" type="checkbox"/>						<input type="checkbox"/>	<input type="checkbox"/>	<input type="checkbox"/>			
9	<input checked="" type="checkbox"/>						<input type="checkbox"/>	<input type="checkbox"/>	<input type="checkbox"/>			
10	<input checked="" type="checkbox"/>						<input type="checkbox"/>	<input type="checkbox"/>	<input type="checkbox"/>			
11	<input checked="" type="checkbox"/>						<input type="checkbox"/>	<input type="checkbox"/>	<input type="checkbox"/>			
12	<input checked="" type="checkbox"/>						<input type="checkbox"/>	<input type="checkbox"/>	<input type="checkbox"/>			

Figure 4: “OPC UA Client Access” window

By clicking on **"Add"**, it is possible to add a new OPC UA Server inserting its characteristics (Server Address, Authorization, Security Type...). The window "Add OPC UA Server" appears (Fig. 5). By clicking on **"Modify"**, it is possible to change these characteristics for the selected Server. The window "Modify OPC UA Server" appears (Fig. 6).



Figure 5: "Add OPC UA Server"

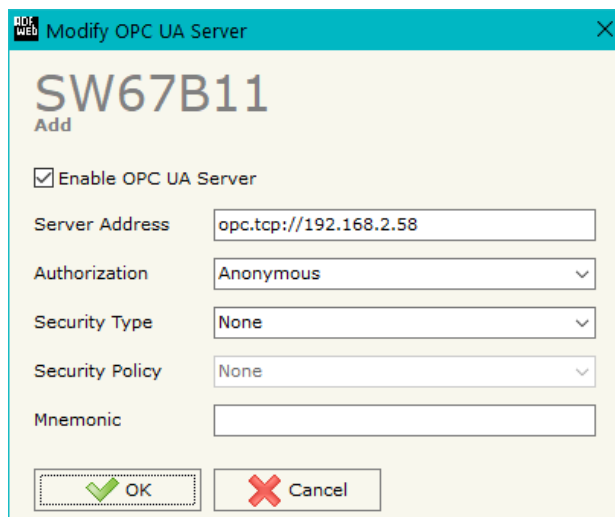
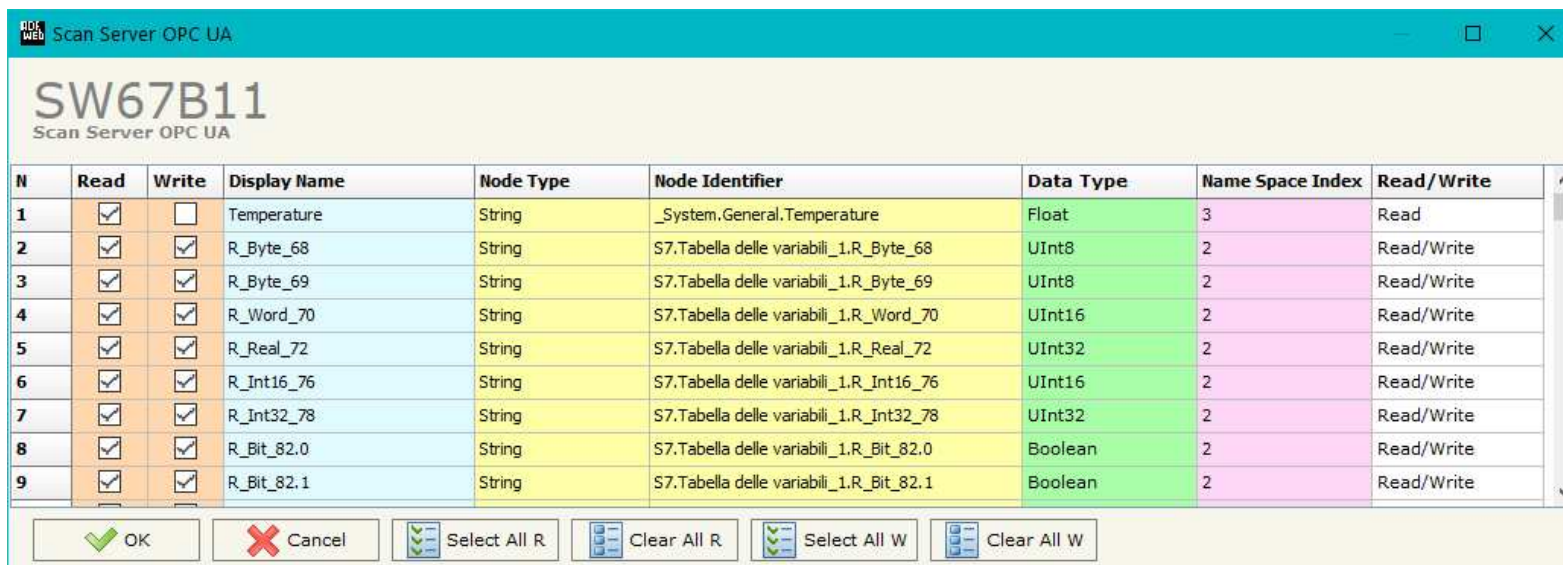


Figure 6: "Modify OPC UA Server"

By clicking on “**Scan**”, it is possible to get the list of available variables from the selected Server. The window “Scan Server OPC UA” appears (Fig. 7).



N	Read	Write	Display Name	Node Type	Node Identifier	Data Type	Name Space Index	Read/Write
1	<input checked="" type="checkbox"/>	<input type="checkbox"/>	Temperature	String	_System.General.Temperature	Float	3	Read
2	<input checked="" type="checkbox"/>	<input checked="" type="checkbox"/>	R_Byte_68	String	S7.Tabella delle variabili_1.R_Byte_68	UInt8	2	Read/Write
3	<input checked="" type="checkbox"/>	<input checked="" type="checkbox"/>	R_Byte_69	String	S7.Tabella delle variabili_1.R_Byte_69	UInt8	2	Read/Write
4	<input checked="" type="checkbox"/>	<input checked="" type="checkbox"/>	R_Word_70	String	S7.Tabella delle variabili_1.R_Word_70	UInt16	2	Read/Write
5	<input checked="" type="checkbox"/>	<input checked="" type="checkbox"/>	R_Real_72	String	S7.Tabella delle variabili_1.R_Real_72	UInt32	2	Read/Write
6	<input checked="" type="checkbox"/>	<input checked="" type="checkbox"/>	R_Int16_76	String	S7.Tabella delle variabili_1.R_Int16_76	UInt16	2	Read/Write
7	<input checked="" type="checkbox"/>	<input checked="" type="checkbox"/>	R_Int32_78	String	S7.Tabella delle variabili_1.R_Int32_78	UInt32	2	Read/Write
8	<input checked="" type="checkbox"/>	<input checked="" type="checkbox"/>	R_Bit_82.0	String	S7.Tabella delle variabili_1.R_Bit_82.0	Boolean	2	Read/Write
9	<input checked="" type="checkbox"/>	<input checked="" type="checkbox"/>	R_Bit_82.1	String	S7.Tabella delle variabili_1.R_Bit_82.1	Boolean	2	Read/Write

Buttons: OK, Cancel, Select All R, Clear All R, Select All W, Clear All W

Figure 7: “Scan Server OPC UA” window

The means of the checkboxes inside the table are:

- If the field “**Read**” is checked, the variable can be read;
- If the field “**Write**” is checked, the variable can be written.



**Note:**

For each variable, it is possible to uncheck these fields and the variable will not be used in read/write.

After the scan, the selected variables will appear in "Variables in Read" and/or "Variables in Write" sections, in the lower part of the window "OPC UA Client Access" (Fig. 4).

The "Variables in Read" section is used to define the OPC UA variables from which take the data of Modbus TCP Slave (Fig. 8).

OPC UA Variables List									
Variables in Read Variables in Write									
N	Enable	Display Name	Node Type	Node ID	Var Type	Name Space Index	Time (ms)	Position	Mnemonic
1	<input checked="" type="checkbox"/>	Temperature	String	_System.General.T	Float	3	1000	0	
2	<input checked="" type="checkbox"/>	R_Byte_68	String	S7.Tabella delle	UInt8	2	2000	4	
3	<input checked="" type="checkbox"/>	R_Byte_69	String	S7.Tabella delle	UInt8	2	2000	5	
4	<input checked="" type="checkbox"/>	R_Word_70	String	S7.Tabella delle	UInt16	2	2000	6	
5	<input checked="" type="checkbox"/>	R_Real_72	String	S7.Tabella delle	UInt32	2	2000	8	
6	<input checked="" type="checkbox"/>	R_Int16_76	String	S7.Tabella delle	UInt16	2	2000	12	
7	<input checked="" type="checkbox"/>	R_Int32_78	String	S7.Tabella delle	UInt32	2	2000	14	
8	<input checked="" type="checkbox"/>	R_Bit_82.0	String	S7.Tabella delle	Boolean	2	2000	18	
9	<input checked="" type="checkbox"/>	R_Bit_82.1	String	S7.Tabella delle	Boolean	2	2000	19	
10	<input checked="" type="checkbox"/>	R_Bit_82.2	String	S7.Tabella delle	Boolean	2	2000	20	
11	<input checked="" type="checkbox"/>	R_Bit_82.3	String	S7.Tabella delle	Boolean	2	2000	21	

☒ OK
☒ Cancel
☒ Delete Row
☒ Insert Row
☒ Copy Row
☒ Paste Row
☒ Auto Pos

Figure 8: "Variables in Read" section

The means of the fields are:

- If the field "**Enable**" is checked, the OPC UA variable is enabled;
- In the field "**Display name**" the name of the OPC UA variable is defined;
- In the field "**Node Type**" the type of the OPC UA node, which includes the variable, is defined;
- In the field "**Node ID**" the name of the OPC UA node, which includes the variable, is defined;
- In the field "**Var Type**" the data format of the OPC UA variable is defined;
- In the field "**Name Space Index**" the Name Space Index of the node, which includes the variable, is defined;
- In the field "**Time (ms)**" the delay in ms between two readings of the variable is defined;
- In the field "**Position**" the starting byte of the internal memory arrays where saving the value is defined;
- In the field "**Mnemonic**" a description of the variable is defined.



The "Variables in Write" section is used to define the OPC UA variables to which map the data of Modbus TCP Slave (Fig. 9).

OPC UA Variables List												
Variables in Read		Variables in Write										
N	Enable	Display Name	Node Type	Node ID	Var Type	Name Space Index	On Change	On CMD	On Timer	Time (ms)	Position	Mnemonic
1	<input checked="" type="checkbox"/>	R_Byte_68	String	S7.Tabella delle	UInt8	2	<input checked="" type="checkbox"/>	<input type="checkbox"/>	<input type="checkbox"/>	0	0	
2	<input checked="" type="checkbox"/>	R_Byte_69	String	S7.Tabella delle	UInt8	2	<input checked="" type="checkbox"/>	<input type="checkbox"/>	<input type="checkbox"/>	0	1	
3	<input checked="" type="checkbox"/>	R_Word_70	String	S7.Tabella delle	UInt16	2	<input checked="" type="checkbox"/>	<input type="checkbox"/>	<input type="checkbox"/>	0	2	
4	<input checked="" type="checkbox"/>	R_Real_72	String	S7.Tabella delle	UInt32	2	<input checked="" type="checkbox"/>	<input type="checkbox"/>	<input type="checkbox"/>	0	4	
5	<input checked="" type="checkbox"/>	R_Int16_76	String	S7.Tabella delle	UInt16	2	<input checked="" type="checkbox"/>	<input type="checkbox"/>	<input type="checkbox"/>	0	8	
6	<input checked="" type="checkbox"/>	R_Int32_78	String	S7.Tabella delle	UInt32	2	<input checked="" type="checkbox"/>	<input type="checkbox"/>	<input type="checkbox"/>	0	10	
7	<input checked="" type="checkbox"/>	R_Bit_82.0	String	S7.Tabella delle	Boolean	2	<input checked="" type="checkbox"/>	<input type="checkbox"/>	<input type="checkbox"/>	0	14	
8	<input checked="" type="checkbox"/>	R_Bit_82.1	String	S7.Tabella delle	Boolean	2	<input checked="" type="checkbox"/>	<input type="checkbox"/>	<input type="checkbox"/>	0	15	
9	<input checked="" type="checkbox"/>	R_Bit_82.2	String	S7.Tabella delle	Boolean	2	<input checked="" type="checkbox"/>	<input type="checkbox"/>	<input type="checkbox"/>	0	16	
10	<input checked="" type="checkbox"/>	R_Bit_82.3	String	S7.Tabella delle	Boolean	2	<input checked="" type="checkbox"/>	<input type="checkbox"/>	<input type="checkbox"/>	0	17	
11	<input checked="" type="checkbox"/>	R_Bit_82.4	String	S7.Tabella delle	Boolean	2	<input checked="" type="checkbox"/>	<input type="checkbox"/>	<input type="checkbox"/>	0	18	

Figure 9: "Variables in Write" section

In "Variables in Write" section (Fig. 8), the means of the fields are:

- If the field "**Enable**" is checked, the OPC UA variable is enabled;
- In the field "**Display name**" the name of the OPC UA variable is defined;
- In the field "**Node Type**" the type of the OPC UA node, which includes the variable, is defined;
- In the field "**Node ID**" the name of the OPC UA node, which includes the variable, is defined;
- In the field "**Var Type**" the data format of the OPC UA variable is defined;
- In the field "**Name Space Index**" the Name Space Index of the node, which includes the variable, is defined;
- If the field "**On Change**" is checked, the OPC UA variable is sent when the data on Modbus TCP changes the value;
- If the field "**On CMD**" is checked, the OPC UA variable is sent when a Modbus TCP request is received;
- If the field "**On Timer**" is checked, the OPC UA variable is sent cyclically;
- In the field "**Time (ms)**" the delay in ms between two writings of the variable is defined (if "On Timer" is checked);



- In the field "**Position**" the starting byte of the internal memory arrays where getting the value is defined;
- In the field "**Mnemonic**" a description of the variable is defined.

**Note:**

By clicking on "**Auto Pos**", the position of the internal memory arrays where saving/getting the value of variable is automatically calculated.

**Note:**

A variable can be added manually in "Variables in Read" and/or "Variables in Write" sections without scanning the OPC UA Server.

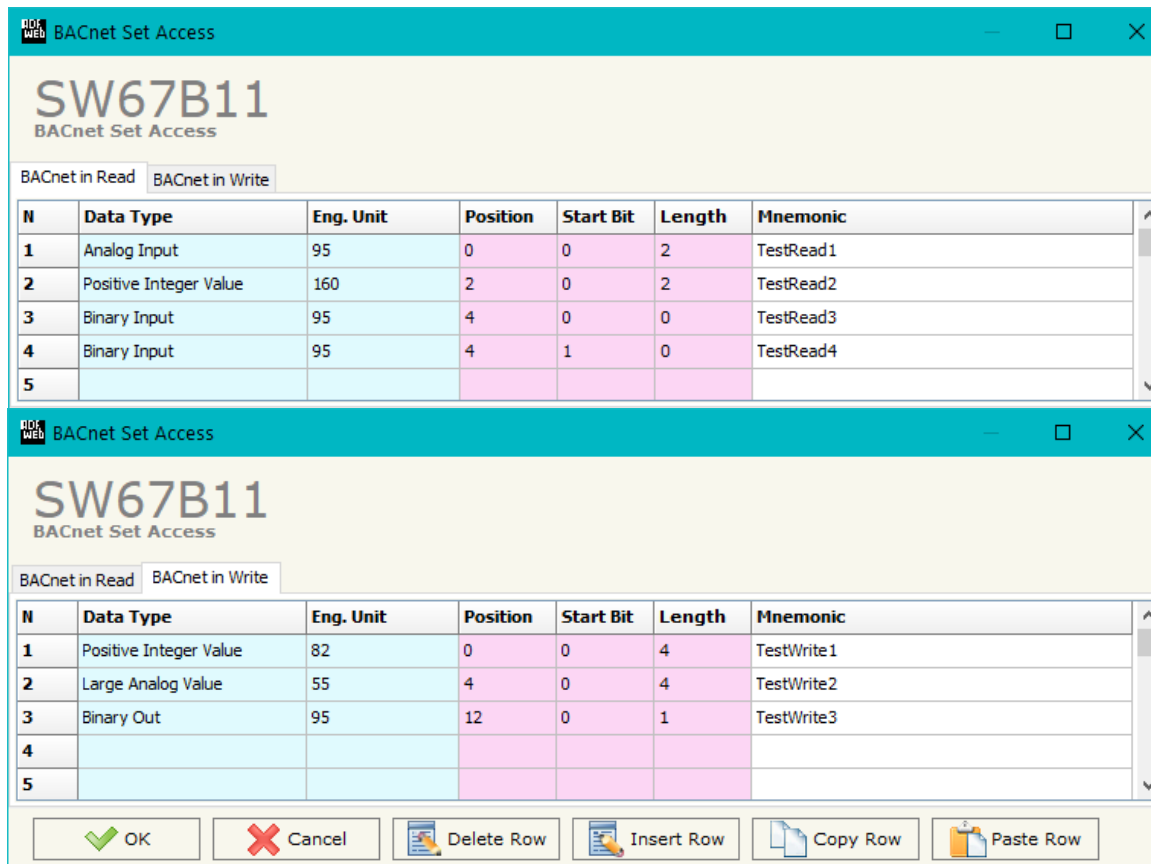
## SET BACNET ACCESS:

By Pressing the **"Set BACnet Access"** button from the main window for SW67938 (Fig. 2) the window "BACnet Set Access" appears (Fig. 5).

The window is divided in two parts, the **"BACnet in Read"** that contains the BACnet objects readable by a BACnet Master (the MQTT messages subscribed); and **"BACnet in Write"** that contains the BACnet objects writeable by a BACnet Master (the MQTT messages published).

The meaning of the fields in the window are the follows:

- In the field **"Data Type"** is possible to select the BACnet object data type;
- In the field **"Eng. Unit"**, with double click the window *"Select the BACnet Engineering Unit"* appears (Fig. 6);
- In the field **"Position"** is possible to select the position where take/save the data from a 6000 bytes array;
- The field **"Start Bit"** is used for the "Binary In" and "Binary Out" BACnet objects;
- The field **"Length"** is used for all the others BACnet objects;
- In the field **"Mnemonic"** a description of the object is defined.



N	Data Type	Eng. Unit	Position	Start Bit	Length	Mnemonic
1	Analog Input	95	0	0	2	TestRead1
2	Positive Integer Value	160	2	0	2	TestRead2
3	Binary Input	95	4	0	0	TestRead3
4	Binary Input	95	4	1	0	TestRead4
5						

N	Data Type	Eng. Unit	Position	Start Bit	Length	Mnemonic
1	Positive Integer Value	82	0	0	4	TestWrite1
2	Large Analog Value	55	4	0	4	TestWrite2
3	Binary Out	95	12	0	1	TestWrite3
4						
5						

Figure 10: "BACnet Set Access" window

Is possible to insert directly the Unit (using its unique number) by compiling the **"Selected BACnet Engineering Unit"** field; or by selecting with the fields **"Select the Type"** and **"Select unit"** the Type/Unit desired. If the second way is used, is necessary to press the **"Select Engineering Unit"** button for confirm the choice.

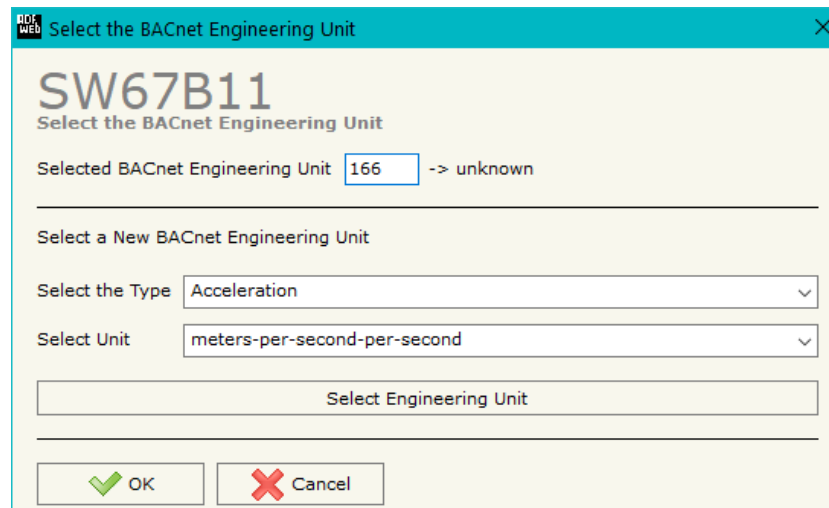


Figure 11: "Select the BACnet Engineering Unit"

### BACNET EDE FILE:

By pressing the **"BACnet EDE File"** button it is possible to save the EDE file for the BACnet Master.

## UPDATE DEVICE:

By pressing the **"Update Device"** button, it is possible to load the created Configuration into the device; and also the Firmware, if necessary. This by using the Ethernet port.

If you don't know the actual IP address of the device you have to use this procedure:

- Turn OFF the Device;
- Put Dip1 of 'Dip-Switch A' in ON position;
- Turn ON the device
- Connect the Ethernet cable;
- Insert the IP **"192.168.2.205"**;
- Select which operations you want to do;
- Press the **"Execute update firmware"** button to start the upload;
- When all the operations are "OK" turn OFF the Device;
- Put Dip1 of 'Dip-Switch A' in OFF position;
- Turn ON the device.

If you know the actual IP address of the device, you have to use this procedure:

- Turn ON the Device with the Ethernet cable inserted;
- Insert the actual IP of the Converter;
- Select which operations you want to do;
- Press the **"Execute update firmware"** button to start the upload;
- When all the operations are "OK" the device automatically goes at Normal Mode.

At this point the configuration/firmware on the device is correctly updated.

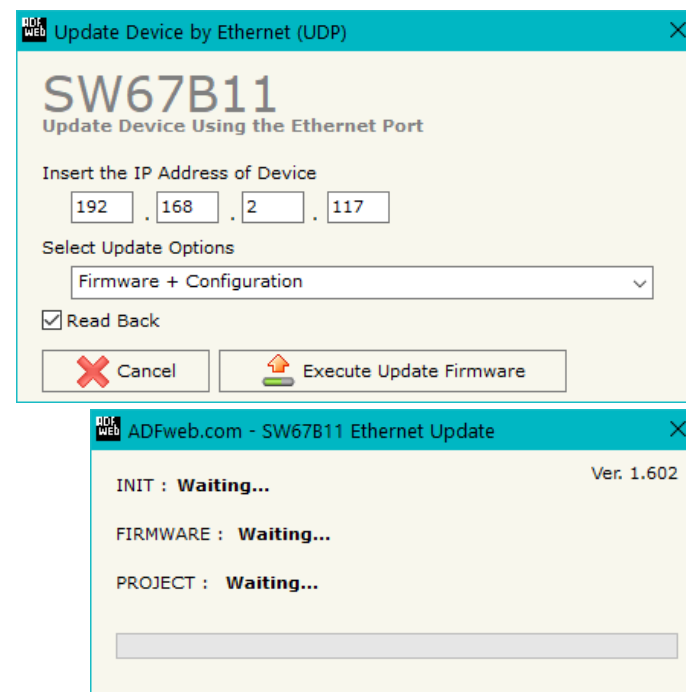


Figure 12: "Update device" windows


**Note:**

When you receive the device, for the first time, you also have to update the Firmware in the HD67B11 device.


**Warning:**

If Fig. 11 appears when you try to do the Update try these points before seeking assistance:

- Check if the serial cable is connected between the PC and the device;
- Try to repeat the operations for the updating;
- Try with another PC;
- Try to restart the PC;
- Check the LAN settings;
- If you are using the program inside a Virtual Machine, try to use in the main Operating System;
- If you are using Windows Seven, Vista, 8 or 10 make sure that you have the administrator privileges;
- In case you have to program more than one device, using the "UDP Update", you have to cancel the ARP table every time you connect a new device on Ethernet. For do this you have to launch the "Command Prompt" and write the command "arp -d". Pay attention that with Windows Vista, Seven, 8, 10 you have to launch the "Command Prompt" with Administrator Rights;
- Pay attention at Firewall lock.

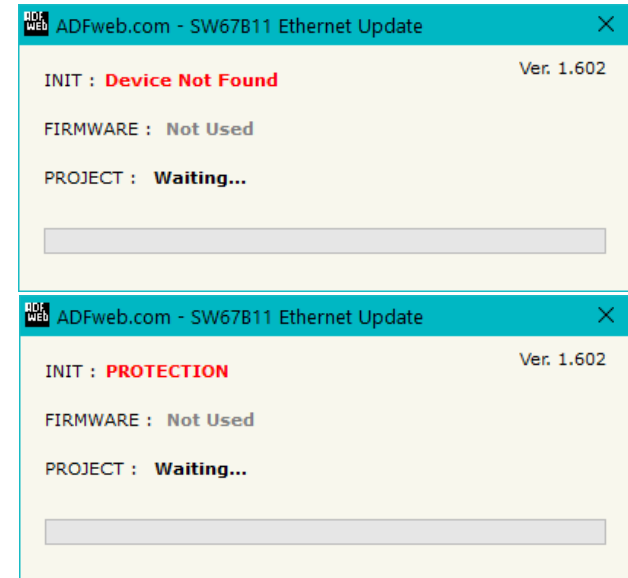


Figure 13: "Error" window


**Warning:**

In the case of HD67B11 you have to use the software "SW67B10": [www.adfweb.com/download/filefold/SW67B11.zip](http://www.adfweb.com/download/filefold/SW67B11.zip).

## MECHANICAL DIMENSIONS:

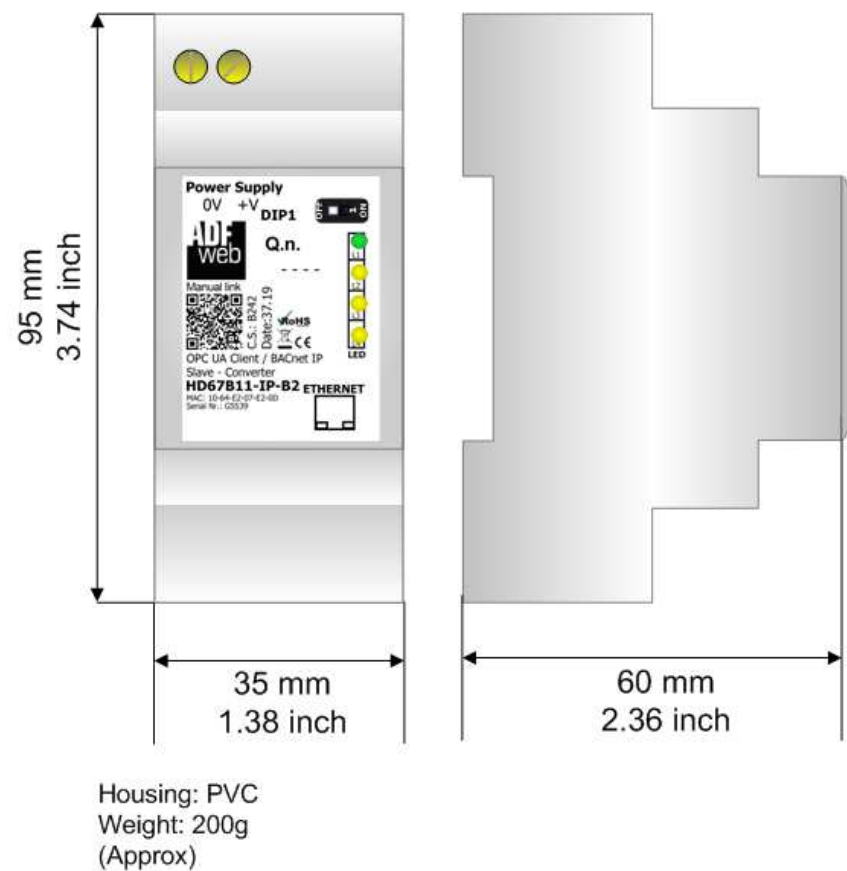


Figure 14: Mechanical dimensions scheme for HD67B11-xxx-B2

## ORDERING INFORMATION:

The ordering part number is formed by a valid combination of the following:

**HD67B11 - xxx - B 2**

### Connectors Type

2: Fixed Screw Terminal

### Enclosure Type

B: Modulbox 2M, 35mm DIN Rail mounting

### BACnet Type

IP: BACnet/IP

MSTP: BACnet MS/TP

### Device Family

HD67B10: OPC UA Client / BACnet Slave - Converter

Order Code: **HD67B11-IP-B2** - OPC UA Client / BACnet/IP Slave - Converter

Order Code: **HD67B11-MSTP-B2** - OPC UA Client / BACnet MS/TP Slave - Converter

## ACCESSORIES:

Order Code: **AC34011** - 35mm Rail DIN - Power Supply 220/240V AC 50/60Hz - 12 V DC

Order Code: **AC34012** - 35mm Rail DIN - Power Supply 220/240V AC 50/60Hz - 24 V DC

**DISCLAIMER:**

All technical content within this document can be modified without notice. The content of the document is a under continual renewal. For losses due to fire, earthquake, third party access or other accidents, or intentional or accidental abuse, misuse, or use under abnormal conditions repairs are charged to the user. ADFweb.com S.r.l. will not be liable for accidental loss of use or inability to use this product, such as loss of business income. ADFweb.com S.r.l. shall not be liable for consequences of improper use.

**OTHER REGULATIONS AND STANDARDS:****WEEE INFORMATION**

Disposal of old electrical and electronic equipment (as in the European Union and other European countries with separate collection systems).

■ This symbol on the product or on its packaging indicates that this product may not be treated as household rubbish. Instead, it should be taken to an applicable collection point for the recycling of electrical and electronic equipment. If the product is disposed correctly, you will help prevent potential negative environmental factors and impact of human health, which could otherwise be caused by inappropriate disposal. The recycling of materials will help to conserve natural resources. For more information about recycling this product, please contact your local city office, your household waste disposal service or the shop where you purchased the product.

**RESTRICTION OF HAZARDOUS SUBSTANCES DIRECTIVE**

The device respects the 2002/95/EC Directive on the restriction of the use of certain hazardous substances in electrical and electronic equipment (commonly referred to as Restriction of Hazardous Substances Directive or RoHS).

**CE MARKING**

The product conforms with the essential requirements of the applicable EC directives.



## WARRANTIES AND TECHNICAL SUPPORT:

For fast and easy technical support for your ADFweb.com SRL products, consult our internet support at [www.adfweb.com](http://www.adfweb.com). Otherwise contact us at the address support@adfweb.com

## RETURN POLICY:

If while using your product you have any problem and you wish to exchange or repair it, please do the following:

- Obtain a Product Return Number (PRN) from our internet support at [www.adfweb.com](http://www.adfweb.com). Together with the request, you need to provide detailed information about the problem.
- Send the product to the address provided with the PRN, having prepaid the shipping costs (shipment costs billed to us will not be accepted).

If the product is within the warranty of twelve months, it will be repaired or exchanged and returned within three weeks. If the product is no longer under warranty, you will receive a repair estimate.



**ADFweb.com S.r.l.**  
Via Strada Nuova, 17  
IT-31010 Mareno di Piave  
TREVISO (Italy)  
Phone +39.0438.30.91.31  
Fax +39.0438.49.20.99  
[www.adfweb.com](http://www.adfweb.com)

