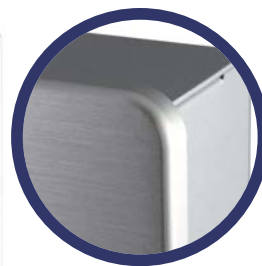




KPC-1900

Preliminary

19" Industrial Touch Panel PC
with 6th Generation Intel® Core™ i Processor



- LGA1151 Socket 6th Generation Intel® Core™ i Processor
- Intel® Q170 Express Chipset
- 2x DDR4 1866/2133 SO-DIMM Socket up to 32GB
- 1x 2.5" HDD / SSD, 1x mSATA (shared w/ mPCIe) for Storage
- 19" 5-wire resistive LCD touch display
- 1x DVI-D, 2x DP for display output
- Triple display support
- 2x LAN, 2x PCIe x8, 2x mPCIe, 1x SIM cage (optional) for network / expansion
- 4x USB3.0, 2x USB2.0, 6x COM for peripheral connection
- TPM & iAMT support
- IP65 aluminium front bezel with brushed finish



Product Overview

Powered by Intel®'s latest 6th Generation Skylake Core™ i Processor, KPC-1900 Panel PC has greatly improved graphics performance, power efficiency and wireless connectivity. In addition to 1x DVI-D, 2x DP, 4x USB3.0, 2x USB2.0, 6x COM, and 2x LAN for display output, peripheral applications and wired networking, it has a variety of expansion slots /sockets for wireless, storage or other

function expansion, including PCIe8 add-on card, mPCIe / mSATA, SATA slots / sockets.

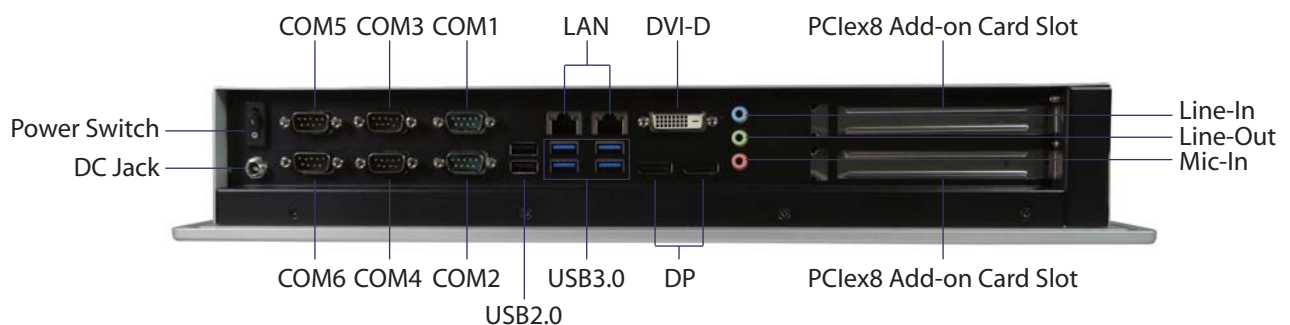
Finally, an IP65-rated aluminium front bezel with brushed finishing that houses the LCD display can not only provide good resistance to water spray but also deliver an aesthetic touch to any space.

Technical Information

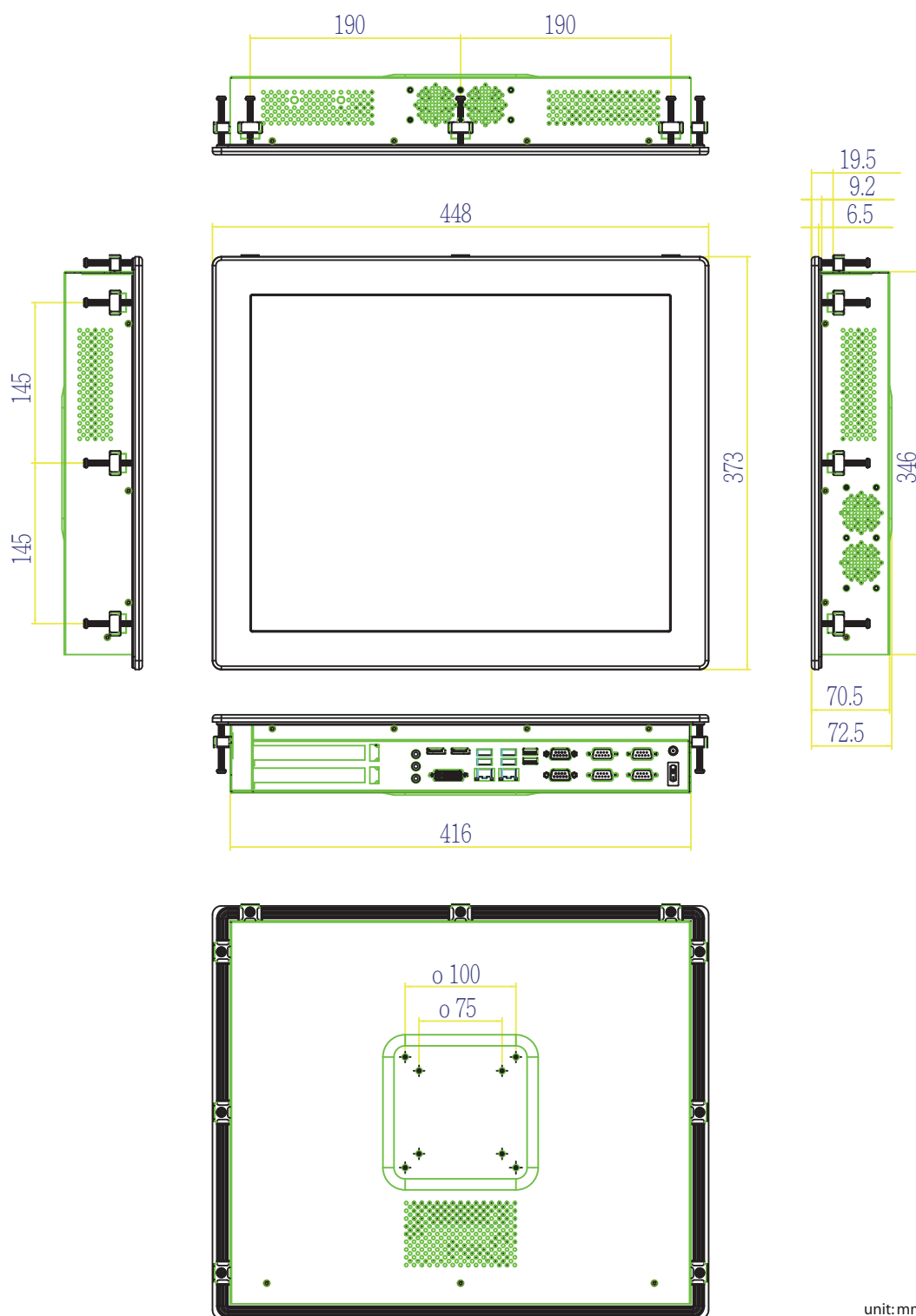
CPU Support	
FCLGA1151 Socket 6th Generation Intel® Core™ i Processor (Dual / Quad Core, 3M ~ 8M Cache, 2.20 ~ 3.60 GHz, up to 45W TDP)	
Chipset	
Intel® Q170	
Memory	
2x DDR4 1866/2133 SO-DIMM up to 32GB	
Storage	
1x 2.5" HDD / SSD 1x mSATA (shared w/ mPCIe)	
Graphic Controller	
Intel® HD Graphics 530	
Display Panel	
Size	19 inch
Aspect Ratio	5:4
Backlight	LED
Resolution	1280x1024 SXGA
Brightness (cd/m², typ.)	250
Contrast Ratio (typ.)	1000:1
Color	16.7M
Viewing Angle (L/R/H/L)	85°/85°/80°/80°
Touch	5-wire resistive touch sensor
Display Interfaces	
1x DVI-D (on rear, 2560 x 1600 @ 60Hz) 2x DP (on rear, 4096 x 2304 @ 60Hz) Triple Display	
Audio Chipset	
Realtek ALC662	
Audio Interfaces	
1x Line-in (on rear) 1x Line-out (on rear) 1x Mic-in (on rear)	
Ethernet	
2x LAN (RJ-45 on rear, 1x Intel® I219-LM, 1x Intel® I210-AT)	
USB	
4x USB3.0 (Type A on rear) 2x USB2.0 (Type A on rear)	

Serial Ports	
3x RS-232/422/485 (DB9 on rear) 3x RS-232 (DB9 on rear)	
Expansion	
2x PCIe8 add-on card slot up to 2x mPCIe (shared w/ mSATA) 1x SIM Card Cage (optional)	
Power Supply	
Connector: Lockable DC Jack (on rear) Input Voltage: DC12V	
Firmware	
BIOS: AMI uEFI BIOS w/ 128Mb SPI Flash Watchdog: Programmable WDT to generate system reset event H/W Monitor: Input & Core Voltages, CPU & System Temperatures Real Time Clock: Chipset integrated RTC TPM: Yes (Infineon SLB 9660 TPM 1.2) iAMT: Yes	
System Control & Monitoring	
1x Power Switch (on rear)	
Cooling	
Fanned	
OS Support	
Windows, Linux	
Construction	
Metal Chassis + Aluminium Front Bezel	
Dimensions (W x H x D)	
448 x 373 x 72.5 mm / 17.64" x 14.69" x 2.85"	
Weight	
6.8 kg / 14.99 lb	
Mounting	
VESA Mount, Panel Mount	
Environmental Characteristics	
Operation Temp.: 0°C ~ 50°C / 32°F ~ 122°F Storage Temp.: -20°C ~ 70°C / -4°F ~ 158°F Humidity: 0% ~ 95%	
Certification	
CE, FCC Class A, IP65 (front bezel)	

KPC-1900 Rear I/Os



Mechanical Dimensions



unit: mm