

User Manual

Revision 1.003
English

J1939 / DeviceNet Slave - Converter

(Order Code: HD67137)

for Website information:

www.adfweb.com?Product=HD67137

for Price information:

www.adfweb.com?Price=HD67137

Benefits and Main Features:

- ▶ Very easy to configure
- ▶ Low cost
- ▶ Designed for serious use
- ▶ Industrial temperature range:
-40°C / 85°C (-85°F / 185°F)



HD67137

For others Gateways / Bridges:

J1939 to Modbus

See also the following links:

www.adfweb.com?Product=HD67212 (Modbus RTU)

CANopen to Modbus

See also the following links:

www.adfweb.com?Product=HD67001 (Modbus RTU Master)

www.adfweb.com?Product=HD67502 (Modbus RTU Slave)

www.adfweb.com?Product=HD67004 (Modbus TCP Master)

www.adfweb.com?Product=HD67505 (Modbus TCP Slave)

For others Gateways / Bridges:

For **CAN bus 2.0A** and/or **CAN bus 2.0B** to **Modbus**

See also the following links:

www.adfweb.com?Product=HD67011 (Modbus RTU Slave)

www.adfweb.com?Product=HD67012 (Modbus RTU Master)

www.adfweb.com?Product=HD67014 (Modbus TCP Slave)

www.adfweb.com?Product=HD67515 (Modbus TCP Master)

Do you have an your customer protocol?

See the following links:

www.adfweb.com?Product=HD67003

Do you need to choose a device? do you want help?

Ask it to the following link:

www.adfweb.com?Cmd=helpme

INDEX:

	Page
INDEX	2
UPDATED DOCUMENTATION	2
REVISION LIST	2
WARNING	2
TRADEMARKS	2
SECURITY ALERT	3
CONNECTION SCHEME	4
CHARACTERISTICS	5
POWER SUPPLY	5
CONFIGURATION	6
USE OF COMPOSITOR SW67137	6
NEW PROJECT / OPEN PROJECT	7
SET COMMUNICATION	8
RECEIVE FRAMES	9
SEND FRAMES	10
UPDATE DEVICE	11
CHARACTERISTICS OF THE CABLES	12
MECHANICAL DIMENSIONS	13
ORDER CODE	13
ACCESSORIES	13
DISCLAIMER	14
OTHER REGULATIONS AND STANDARDS	14
WARRANTIES AND TECHNICAL SUPPORT	15
RETURN POLICY	15
PRODUCTS AND RELATED DOCUMENTS	15

UPDATED DOCUMENTATION:

Dear customer, we thank you for your attention and we remind you that you need to check that the following document is:

- Updated
- Related to the product you own

To obtain the most recently updated document, note the "document code" that appears at the top right-hand corner of each page of this document.

With this "Document Code" go to web page www.adfweb.com/download/ and search for the corresponding code on the page. Click on the proper "Document Code" and download the updates.

To obtain the updated documentation for the product that you own, note the "Document Code" (Abbreviated written "Doc. Code" on the label on the product) and download the updated from our web site www.adfweb.com/download/

REVISION LIST:

Revision	Date	Author	Chapter	Description
1.000	05/11/2008	FI	All	First release version
1.001	03/12/2008	FI	All	Software changed
1.002	10/05/2010	MI Dp	All	Revision
1.003	13/02/2013	Nt	All	Added new chapters

WARNING:

ADFweb.com reserves the right to change information in this manual about our product without warning.

ADFweb.com is not responsible for any error this manual may contain.

TRADEMARKS:

All trademarks mentioned in this document belong to their respective owners.

SECURITY ALERT:**GENERAL INFORMATION**

To ensure safe operation, the device must be operated according to the instructions in the manual. When using the device are required for each individual application, legal and safety regulation. The same applies also when using accessories.

INTENDED USE

Machines and systems must be designed so the faulty conditions do not lead to a dangerous situation for the operator (i.e. independent limit switches, mechanical interlocks, etc.).

QUALIFIED PERSONNEL

The device can be used only by qualified personnel, strictly in accordance with the specifications.

Qualified personnel are persons who are familiar with the installation, assembly, commissioning and operation of this equipment and who have appropriate qualifications for their job.

RESIDUAL RISKS

The device is state of the art and is safe. The instrument can represent a potential hazard if they are inappropriately installed and operated by personnel untrained. These instructions refer to residual risks with the following symbol:



This symbol indicates that non-observance of the safety instructions is danger for people to serious injury or death and / or the possibility of damage.

CE CONFORMITY

The declaration is made by us. You can send an email to support@adfweb.com or give us a call if you need it.

CONNECTION SCHEME:

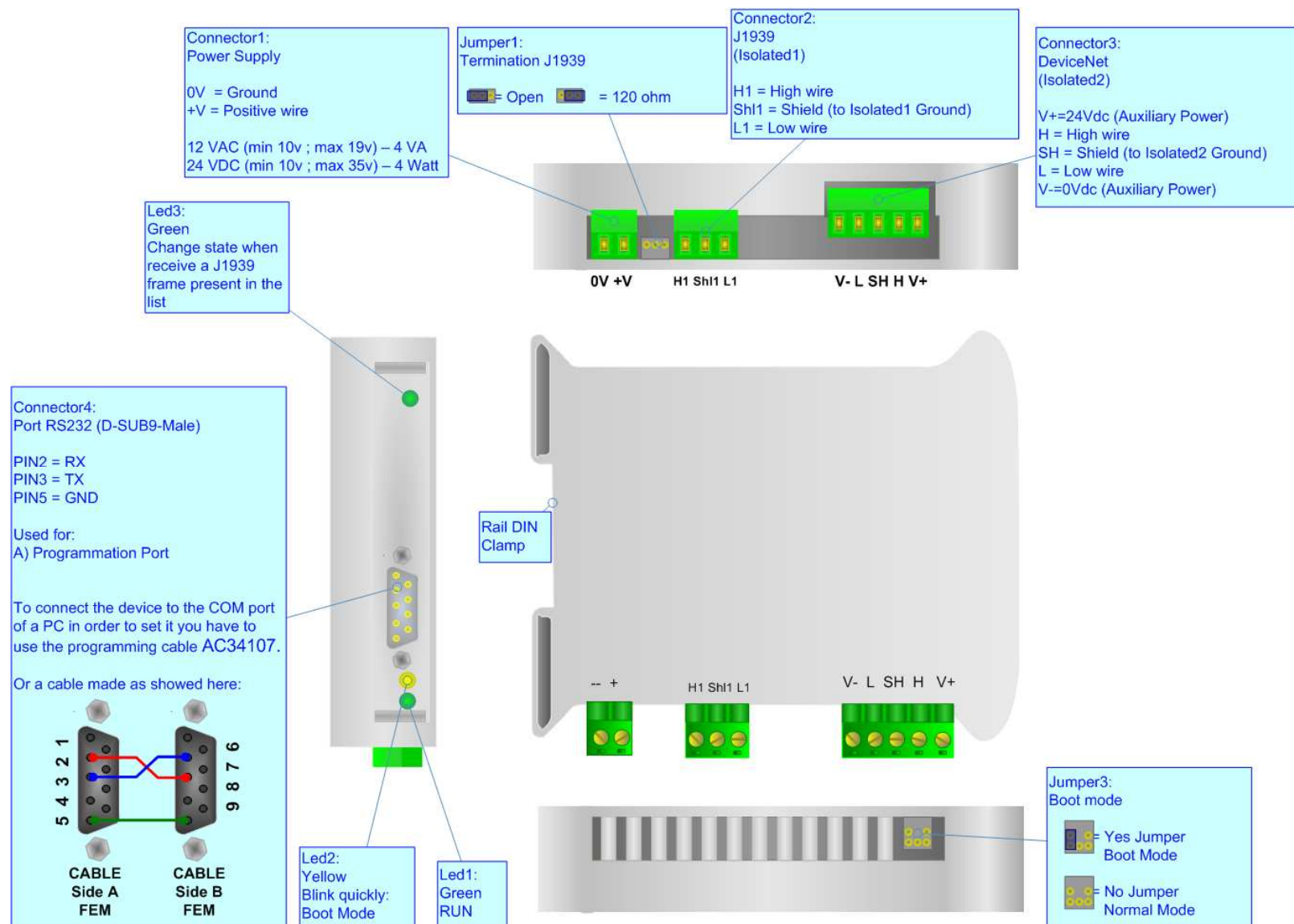


Figure 1: Connection scheme for HD67137

CHARACTERISTICS:

The configurable DeviceNet to J1939 gateway allows the following characteristics:

- Baud Rate changeable with software;
- Mountable on Rail DIN;
- Temperature range from -40°C to 85°C.

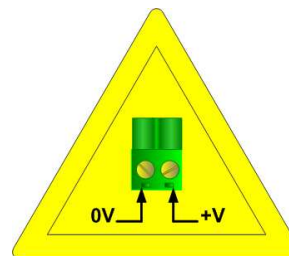
The "Gateway DeviceNet to J1939" allows a J1939 network to communicate with a DeviceNet network.

POWER SUPPLY:

Recommended Power Supply	
VDC	VAC
24v	12v

VDC		VAC	
Vmin	Vmax	Vmin	Vmax
10v	35v	10v	19v

Caution: Not reverse the polarity power .



HD67137

CONFIGURATION:

You need Compositor SW67137 software on your PC in order to perform the following:

- Define the parameters of two buses;
- Define which J1939 frames are reading from the DeviceNet;
- Define which J1939 frames are writing from the DeviceNet.

USE OF COMPOSITOR SW67137:

To configure the Gateway use the available software that runs with Windows, called SW67137. It is downloadable on the site www.adfweb.com and its operation is described in this document.

When launching SW67137 the window on the right appears (Fig. 2).

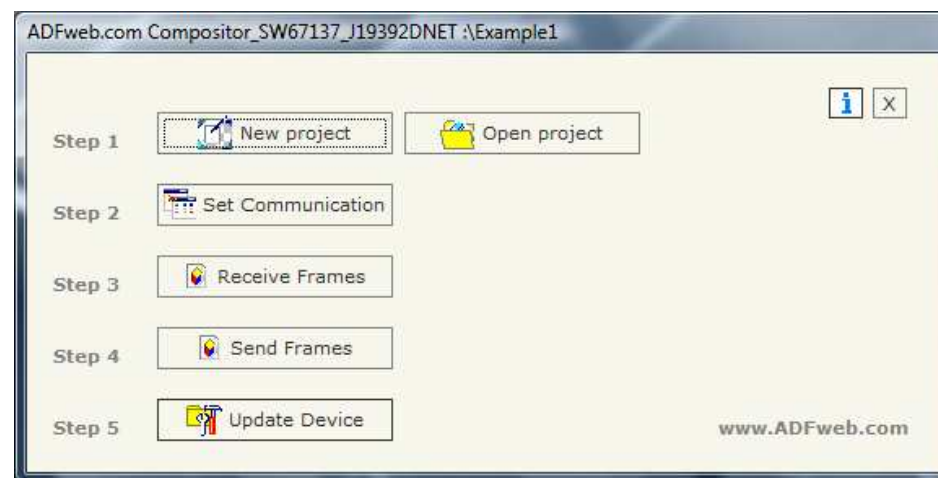


Figure 2: Main window for SW67137

NEW PROJECT / OPEN PROJECT:

The “New Project” button creates the folder which contains the entire device configuration.
A device configuration can also be imported and exported:

- To clone the configurations of a Programmable DeviceNet to J1939 Gateway in order to configure another device in the same manner, it is necessary to maintain the folder and all its contents;
- To clone a project in order to obtain a different version of the project, it is sufficient to duplicate the project folder with another name and open the new folder with the button “Open Project”.

When a new project is created or an existent project is open, it will be possible to access the various configuration sections of the software:

- **“Set Communication”;**
- **“Receive Frames”;**
- **“Send Frame”.**

SET COMMUNICATION:

This section defines the fundamental communication parameters of two Buses, DeviceNet and CAN.

By pressing the "Set Communication" button from the main window for SW67137 (Fig. 2) the window "Set Communication" appears (Fig. 3).

This window is divided in two parts: the first is used to configure the CAN network and the second for the DeviceNet network:

The means of the fields for "CAN" are:

- In the field "Baud rate" the velocity of the CAN bus is defined;
- If the field "Send Frame on Data Change" is checked, the frames are sent when the data are changed; otherwise if the field "Send Frame Every xx ms" is checked you have to insert a value in the field and then the frames defined in the "Send Frames" table are sent every xx ms;
- In the field "TimeOut Data" insert a time; when this time is elapsed and the data isn't reliable, in the register you can read "FFFF";
- If the field "Enable Peer to Peer" is checked, the gateway accepts all the ID that have the PGN inserted in the "Receive Frames" section.

The means of the fields for "DeviceNET" are:

- In the field "ID Dev." the address of the Gateway is defined;
- In the field "Baud rate" the velocity of the DeviceNET bus is defined.

SET COMMUNICATION

CAN

Baud rate: 250K

CAN Type:

- ☐ CAN 2.0A 11Bit
- ☒ CAN 2.0B 29Bit

Send Data:

- ☐ Send Frame on Data Change
- ☒ Send Frame Every 125 ms

TimeOut DATA:

TimeOut Data: 10 s

Peer to Peer:

- ☐ Enable Peer to Peer

DeviceNET

ID Dev.: 12

Baud rate: 500K

OK Cancel

Figure 3: "Set Communication" window

RECEIVE FRAMES:

By pressing the "Receive Frames" button from the main window for SW67137 (Fig. 2) the "Receive Frames" window appears (Fig. 4).

The data of the columns have the following meanings:

- In the field "Data Page" insert the data page, the value is 0 or 1 (usually is 0);
- In the field "PGN" insert the PGN of the data you would like to read from J1939 to DeviceNet (it is an identifier);
- In the field "Source" insert the address of the device that sends the frame;
- If the field "Cancel Data" is checked, the data in the frame will be erased after the expiration of the "TimeOut Data";
- In the field "Mnemonic" the description for the frame is defined.

N°	Data Page	PGN	Source	Cancel Data	Mnemonic
1	0	0xFECA	0x01	<input checked="" type="checkbox"/>	Alarm Engine 1
2	1	0xFECA	0x02	<input type="checkbox"/>	Alarm Engine 2
3				<input type="checkbox"/>	
4				<input type="checkbox"/>	
5				<input type="checkbox"/>	

OK Cancel

Figure 4: "Receive Frames" window

SEND FRAMES:

By pressing the "Send Frames" button from the main window of SW67137 (Fig. 2) the "Send Frames" window appears (Fig. 5).

The data of the columns have the following meanings:

- In the field "Priority" insert the priority of the Frame: in J1939 protocol it is a number among 0,1,2,3,4,5,6,7. The number "0" is the highest priority and "7" is the lowest;
- In the field "Data Page" insert the data page, the value is 0 or 1 (usually is 0);
- In the field "PGN" insert the PGN of the data you would like to write from DeviceNET to J1939 (in J1939 protocol the PGN is an identifier);
- In the field "Source Address" insert the address of the device that sends the frame;
- In the field "Mnemonic" the description for the frame is defined.

N°	Priority	Data Page	PGN	Source Address	Mnemonic
1	6	1	0xFEBA	0x01	
2	5	1	0xFEBC	0x02	
3					
4					
5					

Figure 5: "Send Frames" window

UPDATE DEVICE:

In order to load the parameters or update the firmware in the gateway, follow these instructions:

- Turn OFF the device;
- Connect the Null Modem Cable from your PC to the Gateway;
- Insert the Boot Jumper (For more info see Fig. 1);
- Turn ON the Device;
- Check the Boot Led. It must blink quickly (For more info see Fig. 1)
- Select the COM port and press the "Execute update firmware" button to start the upload;
- When all the operation are "OK" turn OFF the Device;
- Disconnect the Boot Jumper;
- Disconnect the RS232 cable;

Turn ON the device. At this point the configuration/firmware on the device is correctly updated.

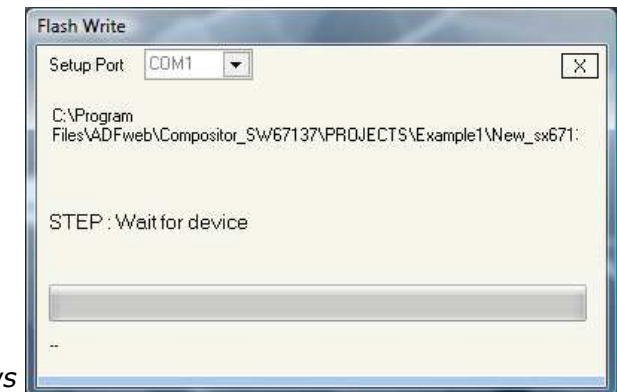
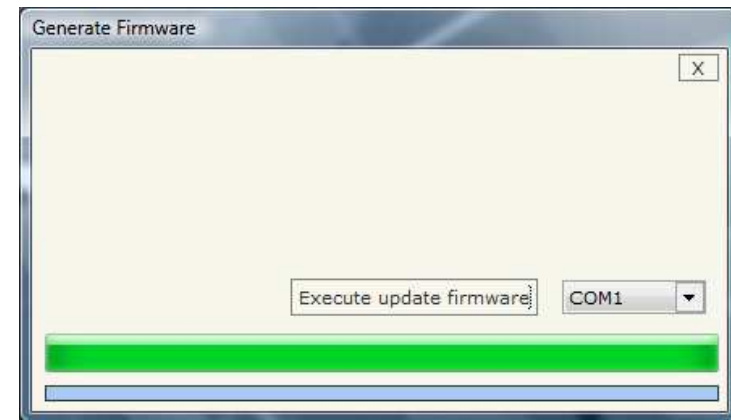
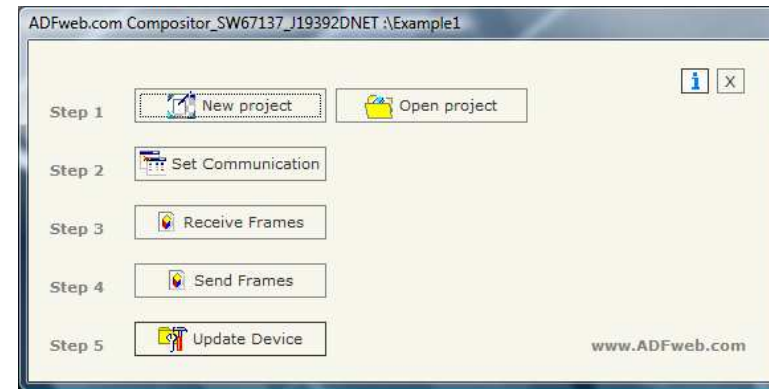


Figure 6: "Update Device" windows

CHARACTERISTICS OF THE CABLES:

The connection from RS232C socket to a serial port (example one from a personal computer), must be made with a Null Modem cable (a serial cable where the pins 2 and 3 are crossed).

It is recommended that the RS232C Cable not exceed 15 meters.

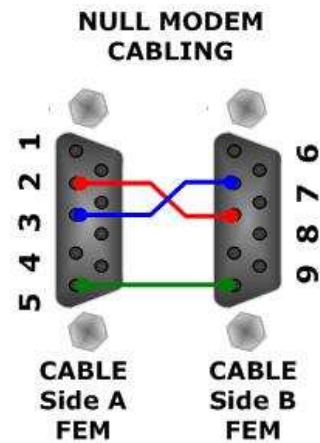


Figure 7: Null modem cabling

MECHANICAL DIMENSIONS:

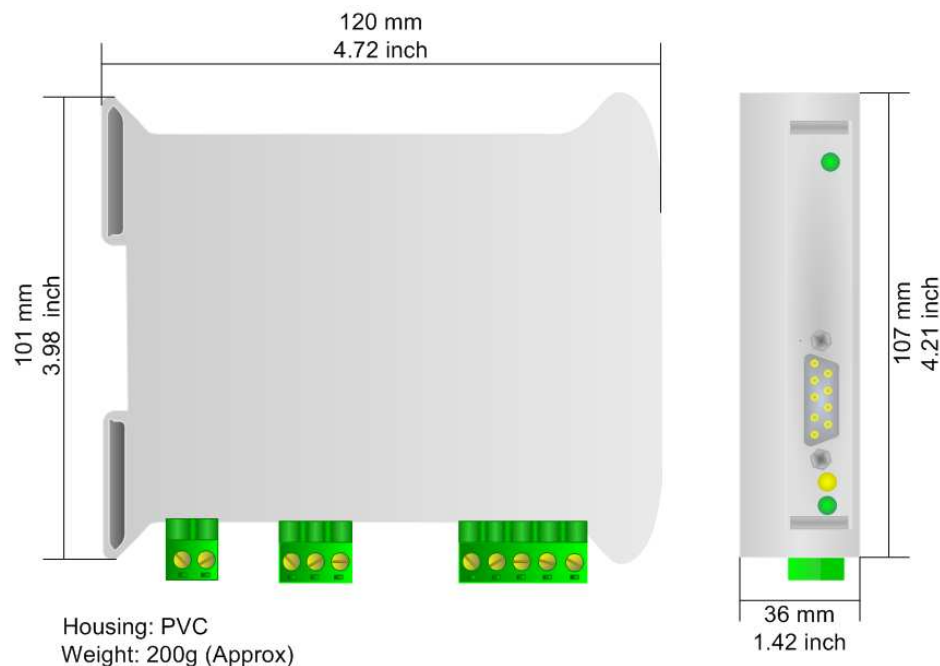


Figure 8: Mechanical dimensions scheme

ORDER CODE:

Order Code: **HD67137** - J1939 / DeviceNet Slave - Converter

ACCESSORIES:

Order Code: **AC34107** - Null Modem Cable Fem/Fem DSub 9 Pin 1,5 m

Order Code: **AC34114** - Null Modem Cable Fem/Fem DSub 9 Pin 5 m

Order Code: **AC34001** - Rail DIN - Power Supply 220/240V AC 50/60Hz – 12 V AC

Order Code: **AC34002** - Rail DIN - Power Supply 110V AC 50/60Hz – 12 V AC

DISCLAIMER

All technical content within this document can be modified without notice. The content of the document content is a recurring audit. For losses due to fire, earthquake, third party access or other accidents, or intentional or accidental abuse, misuse, or use under abnormal conditions repairs are charged to the user. ADFweb.com S.r.l. will not be liable for accidental loss of use or inability to use this product, such as loss of business income. ADFweb.com S.r.l. shall not be liable for consequences of improper use.

OTHER REGULATIONS AND STANDARDS**WEEE INFORMATION**

Disposal of old electrical and electronic equipment (as in the European Union and other European countries with separate collection systems).

■ This symbol on the product or on its packaging indicates that this product may not be treated as household rubbish. Instead, it should be taken to an applicable collection point for the recycling of electrical and electronic equipment. If the product is disposed correctly, you will help prevent potential negative environmental factors and human health, which could otherwise be caused by inappropriate disposal. The recycling of materials will help to conserve natural resources. For more information about recycling this product, please contact your local city office, your household waste disposal service or the shop where you purchased the product.

RESTRICTION OF HAZARDOUS SUBSTANCES DIRECTIVE

The device respects the 2002/95/EC Directive on the restriction of the use of certain hazardous substances in electrical and electronic equipment (commonly referred to as Restriction of Hazardous Substances Directive or RoHS).

CE MARKING

The product conforms with the essential requirements of the applicable EC directives.

WARRANTIES AND TECHNICAL SUPPORT:

For fast and easy technical support for your ADFweb.com SRL products, consult our internet support at www.adfweb.com. Otherwise contact us at the address support@adfweb.com

RETURN POLICY:

If while using your product you have any problem and you wish to exchange or repair it, please do the following:

- 1) Obtain a Product Return Number (PRN) from our internet support at www.adfweb.com. Together with the request, you need to provide detailed information about the problem.
- 2) Send the product to the address provided with the PRN, having prepaid the shipping costs (shipment costs billed to us will not be accepted).

If the product is within the warranty of twelve months, it will be repaired or exchanged and returned within three weeks. If the product is no longer under warranty, you will receive a repair estimate.

PRODUCTS AND RELATED DOCUMENTS:

Part	Description	URL
HD67121	Gateway CANopen / Canopen	www.adfweb.com?product=HD67121
HD67502	Gateway CANopen / Modbus - RTU	www.adfweb.com?product=HD67502
HD67505	Gateway CANopen / Modbus - Ethernet TCP	www.adfweb.com?product=HD67505
HD67134	Gateway CANopen / DeviceNet	www.adfweb.com?product=HD67134
HD67117	CAN bus Repeater	www.adfweb.com?product=HD67117
HD67216	CAN bus Analyzer	www.adfweb.com?product=HD67216