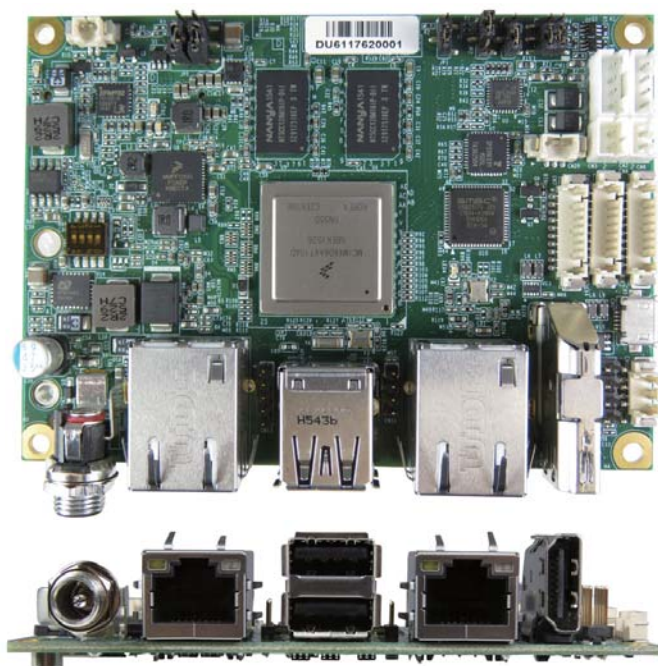


PITX-MX60 Series

Standard / Extreme Temperature
Single Board Computer in Pico-ITX Form Factor
with NXP® ARM® Cortex®-A9 Core i.MX6 Processor



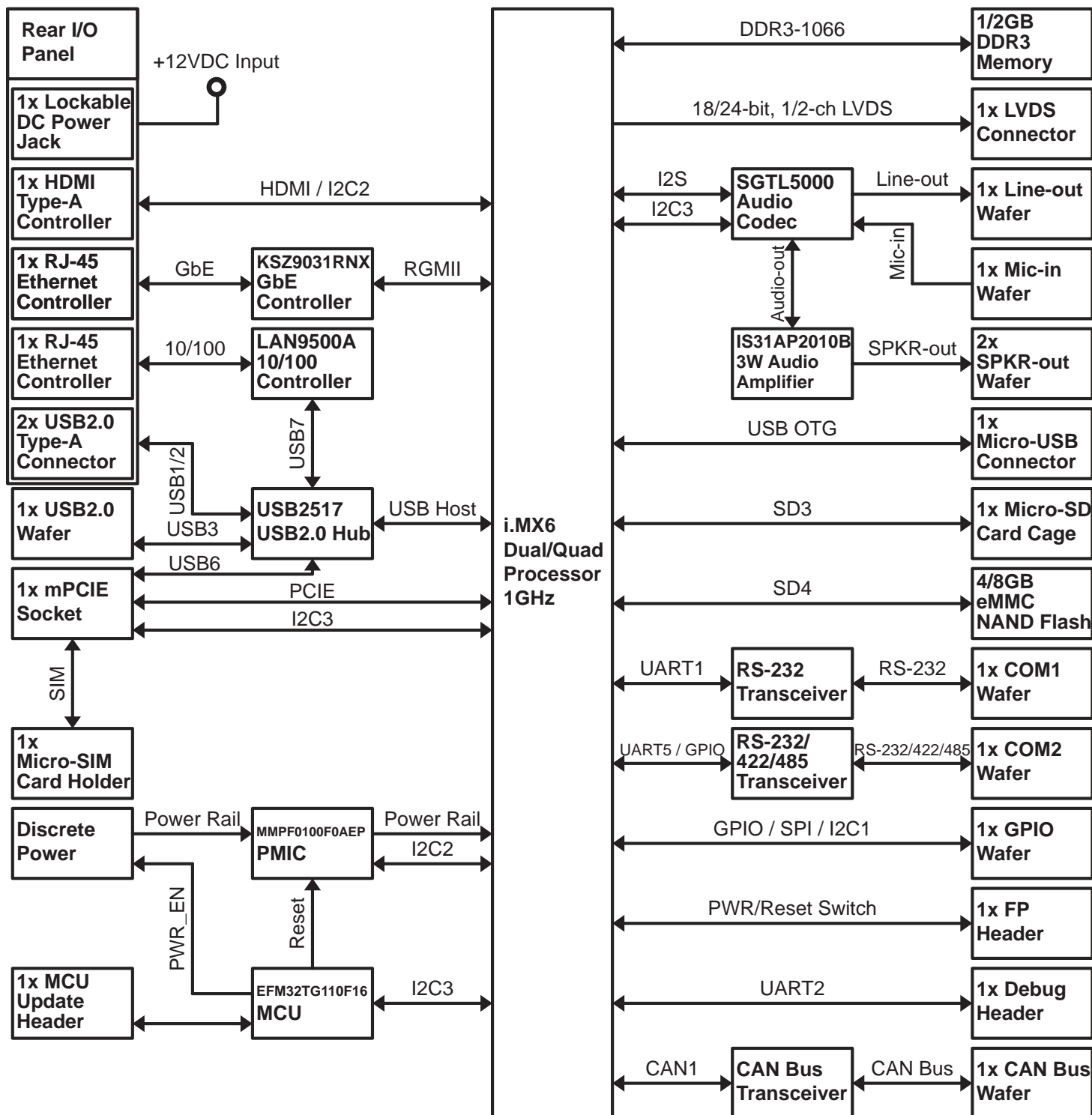
- NXP® ARM® Cortex®-A9 Core i.MX 6Dual / Quad Processor
- 1GB/2GB DDR3 memory
- 4GB/8GB eMMC NAND Flash onboard, 1x Micro-SD Card Cage for storage
- 1x LVDS (18/24-bit, 1/2-ch support), 1x HDMI for video output
- 2x LAN, 1x mPCIe, 1x Micro-SIM Card Cage for network connection
- 3x USB2.0, 1x USB OTG, 2x COM, 1x GPIO/SPI/I2C, 1x CAN for peripheral connection
- Extreme temperature model available: -40°C ~ 85°C

Product Overview

PITX-MX60 Series is a Pico-ITX single board computer based on NXP® ARM® Cortex®-A9 Core i.MX6 Dual / Quad Processor. It features ultra-small and compact form factor, low power consumption, fanless architecture and extreme operating temperature range for partial models. In addition to HDMI, USB and serial ports, it provides a highly flexible connectivity option for GPIO / SPI / I2C,

CAN bus and allows connection to many off-the-shelf peripherals. Thus, it is an ideal platform to easily generate small, portable or mobile embedded devices used in every possible environment and application, such as automotive infotainment, telematics, healthcare, thin clients or HMI.

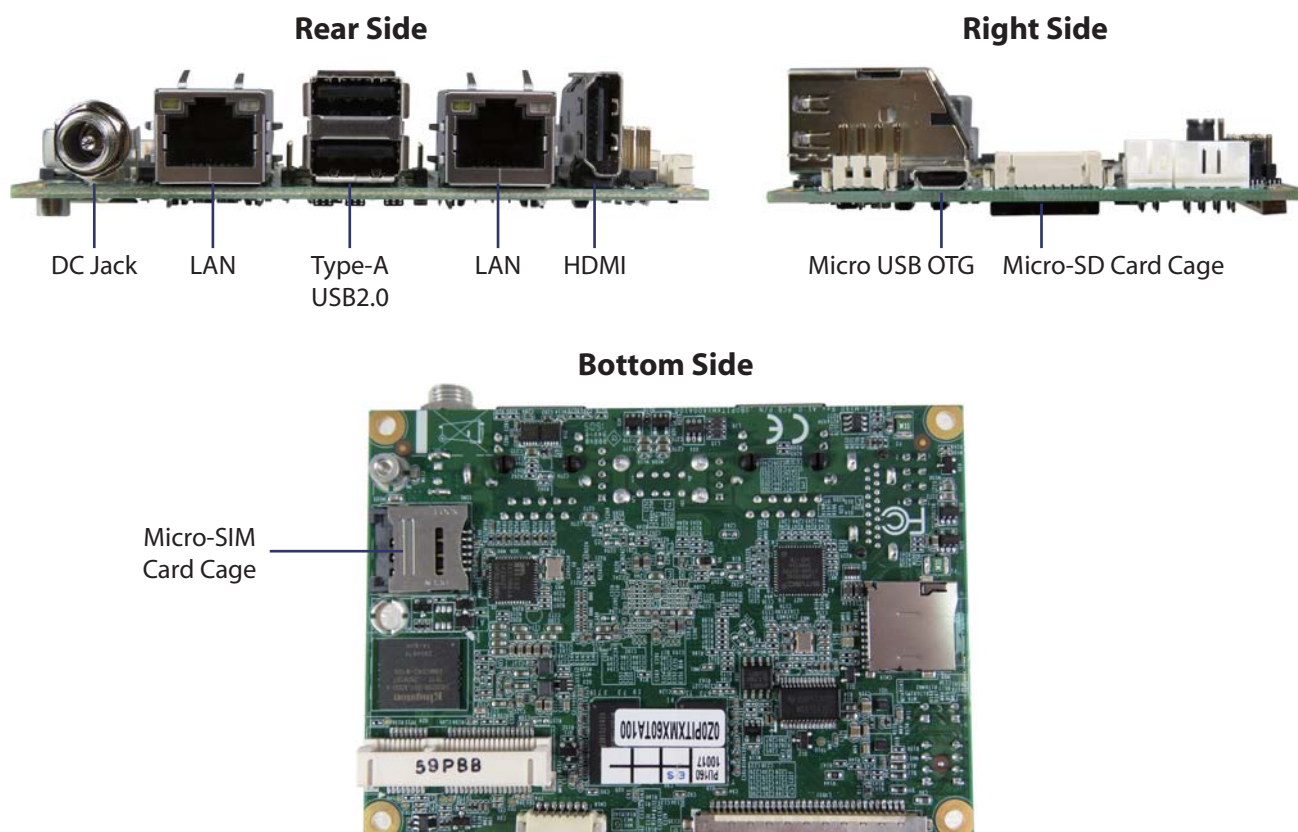
Block Diagram



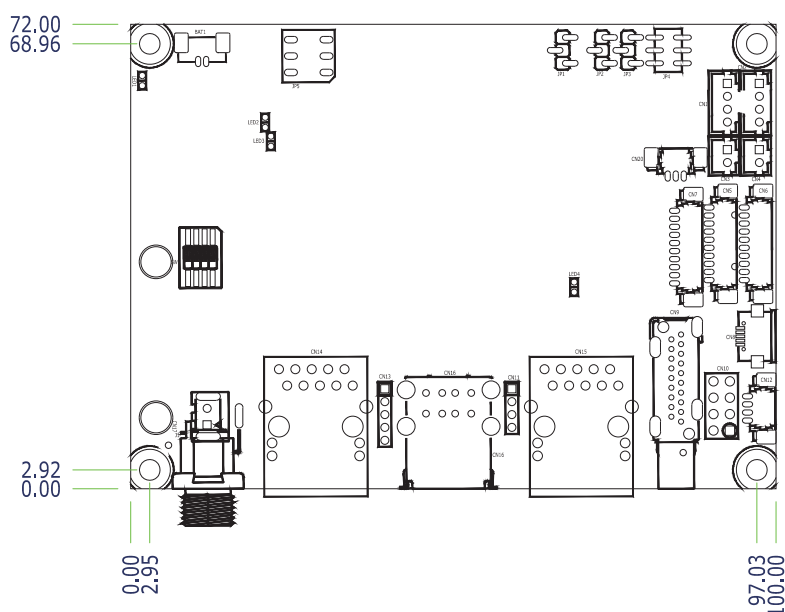
Technical Information

CPU Support PITX-MX60T, MX61T, MX62T, MX63T: NXP® ARM® Cortex®-A9 Core i.MX6 Dual Automotive (Dual Core, 1M Cache, 1 GHz) PITX-MX64/MX65/MX66: NXP® ARM® Cortex®-A9 Core i.MX6 Dual Extended Consumer (Dual Core, 1M Cache, 1 GHz) PITX-MX67: NXP® ARM® Cortex®-A9 Core i.MX6 Quad Extended Consumer (Quad Core, 1M Cache, 1 GHz)	Serial Ports 1x RS-232/422/485 (by header) 1x RS-232 (by header)
Memory 1GB DDR3-1066 Onboard (PITX-MX60T, MX62T, MX66) 2GB DDR3-1066 Onboard (PITX-MX61T, MX63T, MX64, MX65, MX67)	Other I/O Ports 1x GPIO / SPI / I2C 1x CAN Bus
Display Interfaces 1x LVDS (18/24-bit, 1/2-ch, 1920 x 1200 @ 60Hz) 1x HDMI (1920 x 1080 @ 30Hz, on rear)	Storage & Expansion 4GB eMMC onboard (PITX-MX60T, MX61T, MX65, MX66) 8GB eMMC onboard (PITX-MX62T, MX63T, MX64, MX67) 1x Micro-SD Card Cage (on right) 1x mPCIe (full size) 1x Micro-SIM Card Cage
Multiple Display Dual	Power Supply Connector: Lockable DC Jack (on rear) Input Voltage: DC 12V
Audio Chipset NXP® SGT5000	System Control & Monitoring 1x Header for Front Panel (Power Switch / LED, Reset & WWAN LED)
Audio Interfaces 2x Speaker-out (3W, ISSI IS31AP2010B) 1x Line-out (by header) 1x Mic-in (by header)	OS Support Linux 3.0.35
Ethernet 1x GbE LAN (RJ-45 on rear, Micrel KSZ9031RNX) 1x 10/100 LAN (RJ-45 on rear, Microchip LAN9500A)	Dimensions Pico-ITX (100 x 72 mm / 3.94" x 2.83")
USB 3x USB2.0 (2x Type A on rear, 1x by header) 1x USB OTG (Micro-USB on right)	Mechanical Characteristics Operation Temp.: 0°C ~ 60°C / 32°F ~ 140°F (Standard) -40°C ~ 85°C / -40°F ~ 185°F (Extreme) Storage Temp.: -20°C ~ 80°C / -4°F ~ 176°F (Standard) -55°C ~ 85°C / -67°F ~ 185°F (Extreme) Humidity: 0% ~ 95%
	Certification CE, FCC Class A

PITX-MX60 Series I/Os



Mechanical Dimensions



Ordering Information



Article	Part No.	Description
PITX-MX60T	BMPXMX6T-000000T	NXP i.MX 6D Automotive, 1GB DDR3, 4GB eMMC, 1x μ SD, 1x LVDS, 1x HDMI, 2x LAN, 1x mPCIe, 1x μ SIM, 3x USB2.0, 1x USB OTG, 2x COM, Op. temp.: -40 ~ 85°C
PITX-MX61T	BMPXMX6T-010000T	NXP i.MX 6D Automotive, 2GB DDR3, 4GB eMMC, 1x μ SD, 1x LVDS, 1x HDMI, 2x LAN, 1x mPCIe, 1x μ SIM, 3x USB2.0, 1x USB OTG, 2x COM, Op. temp.: -40 ~ 85°C
PITX-MX62T	BMPXMX6T-020000T	NXP i.MX 6D Automotive, 1GB DDR3, 8GB eMMC, 1x μ SD, 1x LVDS, 1x HDMI, 2x LAN, 1x mPCIe, 1x μ SIM, 3x USB2.0, 1x USB OTG, 2x COM, Op. temp.: -40 ~ 85°C
PITX-MX63T	BMPXMX6T-030000T	NXP i.MX 6D Automotive, 2GB DDR3, 8GB eMMC, 1x μ SD, 1x LVDS, 1x HDMI, 2x LAN, 1x mPCIe, 1x μ SIM, 3x USB2.0, 1x USB OTG, 2x COM, Op. temp.: -40 ~ 85°C
PITX-MX64	BMPXMX60-040000T	NXP i.MX 6D Extended Consumer, 2GB DDR3, 8GB eMMC, 1x μ SD, 1x LVDS, 1x HDMI, 2x LAN, 1x mPCIe, 1x μ SIM, 3x USB2.0, 1x USB OTG, 2x COM, Op. temp.: 0 ~ 60°C
PITX-MX65	BMPXMX60-050000T	NXP i.MX 6D Extended Consumer, 2GB DDR3, 4GB eMMC, 1x μ SD, 1x LVDS, 1x HDMI, 2x LAN, 1x mPCIe, 1x μ SIM, 3x USB2.0, 1x USB OTG, 2x COM, Op. temp.: 0 ~ 60°C
PITX-MX66	BMPXMX60-060000T	NXP i.MX 6D Extended Consumer, 1GB DDR3, 4GB eMMC, 1x μ SD, 1x LVDS, 1x HDMI, 2x LAN, 1x mPCIe, 1x μ SIM, 3x USB2.0, 1x USB OTG, 2x COM, Op. temp.: 0 ~ 60°C
PITX-MX67	BMPXMX60-070000T	NXP i.MX 6Q Extended Consumer, 2GB DDR3, 8GB eMMC, 1x μ SD, 1x LVDS, 1x HDMI, 2x LAN, 1x mPCIe, 1x μ SIM, 3x USB2.0, 1x USB OTG, 2x COM, Op. temp.: 0 ~ 60°C