

IDEMAG - Magnetic Non Contact Type: SPR

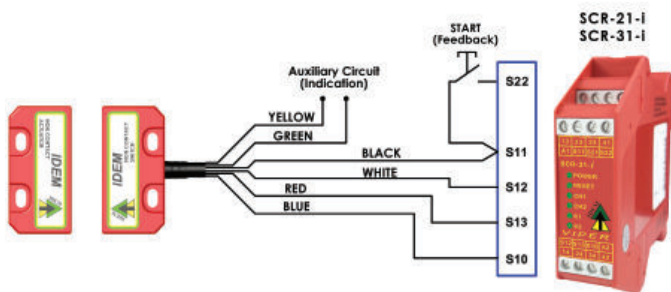
FEATURES:

Universal fitting - established 22mm fixing footprint
 Suitable for most general industry applications
 Can be high pressure hosed at high temperature - IP69K
 Withstands environments where high humidity or hose down is required
 Wide sensing at 12mm and high tolerance to misalignment
 High specification polyester housing with integral back plate
 Long life high current switching capability up to 1A
 Up to: PLe ISO13849-1
 2NC 1NO circuits
 Quick Connect versions available

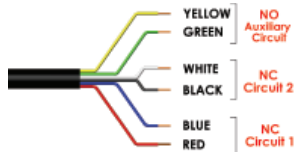
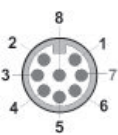


Magnetic Actuation - Power Series
Switching Tolerance up to 12mm
Medium Duty versions 230Vac/24Vdc 1A
Will operate with most Safety Relays

CONNECTION EXAMPLE: Magnetic Switches



Single switch connected to an SCR-21-i or SCR-31-i to give Dual Channel guard monitoring with Manual Start. Optional auxiliary circuit provides for remote signalling from switch.



Quick Connect QC M12 8 Way Male Plug Pin view from Switch	Standard Lead Colour	Circuit (Actuator Present)
4	Yellow	NO
6	Green	NO
7	Black	NC2
1	White	NC2
2	Red	NC1
3	Blue	NC1

Standards: ISO14119 EN60947-5-1
 EN60204-1 ISO13849-1 EN62061 UL508

Safety Classification and Reliability Data:
 Mechanical Reliability B10d 3.3 x 10⁶ operations at 100mA load
 ISO13849-1 Up to PLe depending upon system architecture
 EN62061 Up to SIL3 depending upon system architecture
 Safety Data - Annual Usage 8 cycles per hour/24 hours per day/365 days
 PFHd 2.52 x 10⁻⁶
 Proof Test Interval (Life) 47 years
 MTTFd 470 years
 Safety Channel 1 NC Voltage Free: 250Vac 1.0A Max. Rating
 Safety Channel 2 NC Voltage Free: 250Vac 1.0A Max. Rating
 Safety Channel 3 NO Voltage Free: 24Vdc 0.2A Max. Rating
 Fuse Internal 1.0A (F) External 0.8A (F) (User)
 Contact Release Time <2ms
 Initial Contact Resistance <500 milliohm
 Minimum Switched Current 10Vdc 1mA
 Dielectric Withstand 250Vac
 Insulation Resistance 100 Mohms
 Recommended Setting Gap 5mm
 Switching Distance Sao 10mm Close Sar 22mm Open
 Tolerance to Misalignment 5mm in any direction from 5mm setting gap
 Switching Frequency 1.0Hz maximum
 Approach Speed 200mm/min to 1000mm/sec
 Body Material UL approved polyester
 Operating Temperature -25C +80C
 Enclosure Protection IP69K (NEMA PW12) IP67 (NEMA 6)
 Shock Resistance IEC68-2-27 11ms 30g
 Vibration Resistance IEC68-2-6 10-55Hz 1mm
 Cable Type PVC 6 core 6mm OD Conductors 0.25mm²
 Mounting Bolts 2xM4 Tightening torque 1.0Nm
 Mounting Position Any

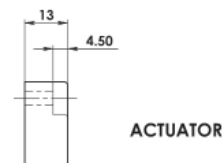
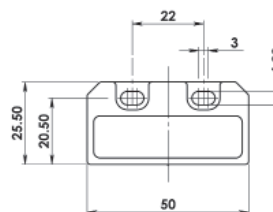
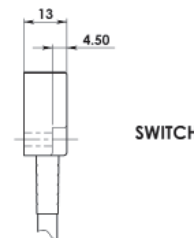
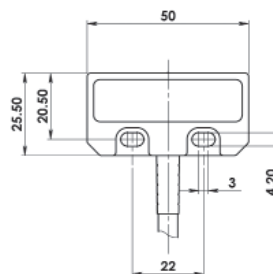
For all IDEM switches the normally closed (NC) circuits are closed when the guard is closed and the actuator is present.



Quick Connect M12 versions fitted with 250mm (10") cable



DIMENSIONS:



SALES NUMBER	TYPE	CABLE LENGTH	CIRCUITS
111009	Idemag SPR	2M	2NC
111010	Idemag SPR	5M	2NC
111011	Idemag SPR	10M	2NC
111012	Idemag SPR	QC-M12	2NC
111013	Idemag SPR	2M	2NC 1NO
111014	Idemag SPR	5M	2NC 1NO
111015	Idemag SPR	10M	2NC 1NO
111016	Idemag SPR	QC-M12	2NC 1NO

140101	Female QC Lead	M12 Female 5m. 8 way
140102	Female QC Lead	M12 Female 10m. 8 way

111300	Plastic 8mm Spacers (2) for use when mounting on Ferrous Materials	1 x Switch 1 x Actuator
--------	--	----------------------------