

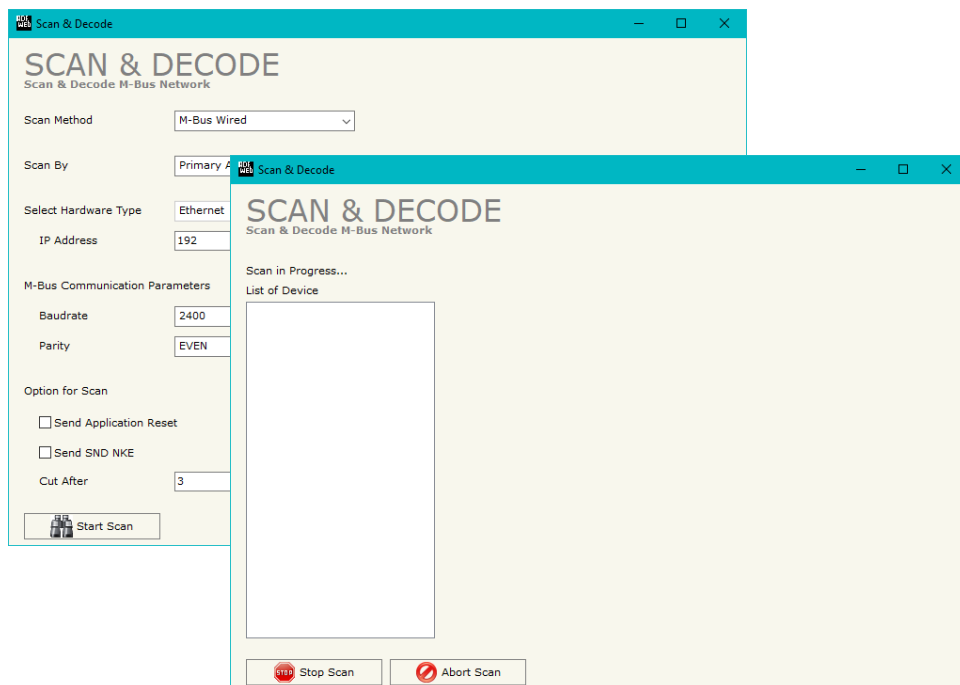
User Manual

Revision 1.000
English

SCAN & DECODE FUNCTION FOR M-BUS AND M-BUS WIRELESS CONVERTERS

M-Bus

M-Bus
wireless



Converter M-Bus / M-Bus Wireless to

www.adfweb.com?Product=HD67029
www.adfweb.com?Product=HD67044
www.adfweb.com?Product=HD67051
www.adfweb.com?Product=HD67053
www.adfweb.com?Product=HD67056
www.adfweb.com?Product=HD67077
www.adfweb.com?Product=HD67078
www.adfweb.com?Product=HD67082
www.adfweb.com?Product=HD67083
www.adfweb.com?Product=HD67086
www.adfweb.com?Product=HD67811

(Modbus)
 (Modbus TCP)
 (CANopen)
 (PROFIBUS)
 (BACnet)
 (EtherNet/IP)
 (PROFINET)
 (Modbus)
 (Modbus TCP)
 (BACnet)
 (KNX)

Do you have an your customer protocol?

www.adfweb.com?Product=HD67003

Do you need to choose a device? do you want help?

www.adfweb.com?Cmd=helpme

INDEX:

	Page
UPDATED DOCUMENTATION	2
REVISION LIST	2
WARNING	2
TRADEMARKS	2
INDEX	2
THE SOFTWARE	3
INSTALLATION	3
CHARACTERISTICS	3
USE OF SCAN & DECODE FUNCTIONS	4
- SCAN & DECODE M-BUS NETWORK – GENERAL SETTINGS	4
- SCAN & DECODE M-BUS NETWORK – SCANNING	5
- SCAN & DECODE M-BUS NETWORK – VARIABLE LIST	6
WARRANTIES AND TECHNICAL SUPPORT	7
RETURN POLICY	7

UPDATED DOCUMENTATION:

Dear customer, we thank you for your attention and we remind you that you need to check that the following document is:

- Updated
- Related to the product you own

To obtain the most recently updated document, note the “document code” that appears at the top right-hand corner of each page of this document.

With this “Document Code” go to web page www.adfweb.com/download/ and search for the corresponding code on the page. Click on the proper “Document Code” and download the updates.

REVISION LIST:

Revision	Date	Author	Chapter	Description
1.000	26/07/2017	Ff	All	First release version

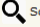
WARNING:

ADFweb.com reserves the right to change information in this manual about our product without warning.
ADFweb.com is not responsible for any error this manual may contain.

TRADEMARKS:

All trademarks mentioned in this document belong to their respective owners.

THE SOFTWARE:

"SCAN & DECODE" functions are integrated in the configurator software of the M-Bus converters. It is possible to access to these functions by simple click on the " Scan & Decode" button.

INSTALLATION:

Any installation is required, the SCAN & DECODE function is contained directly in the configurator software of the converters.

CHARACTERISTICS:

It has the following characteristics:

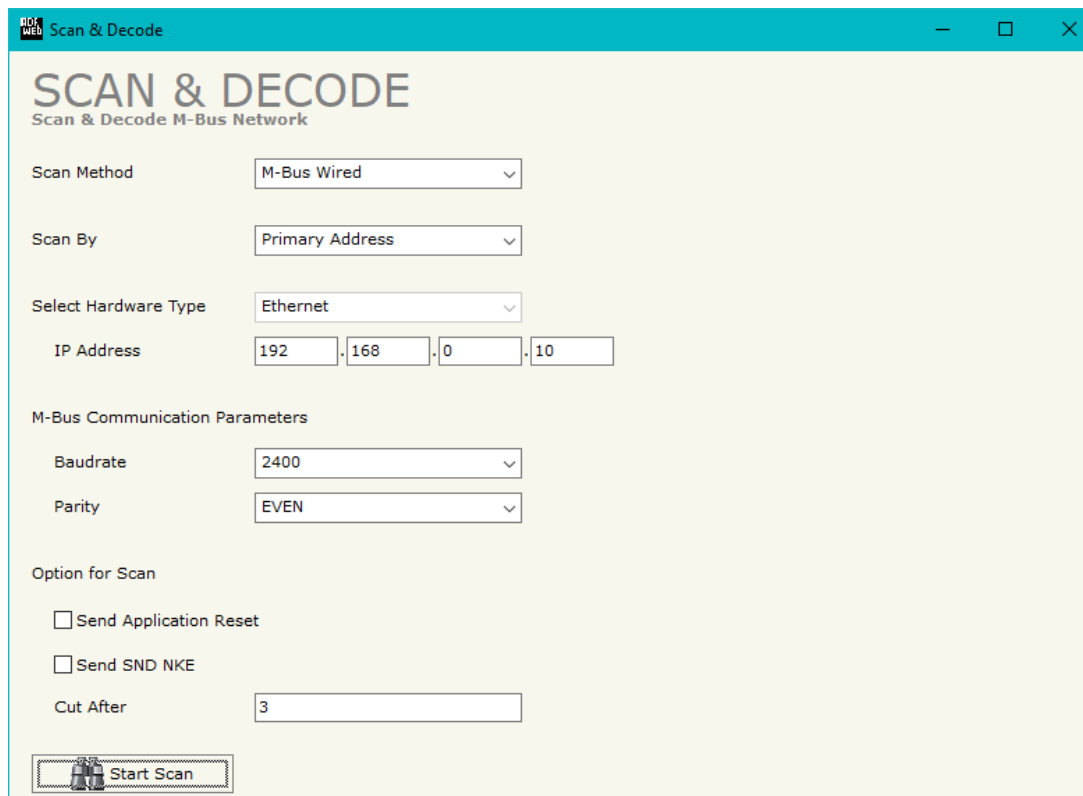
- Possibility to scan M-Bus and M-Bus Wireless network (in relation to the product used);
- Automatic decode of M-Bus telegrams;
- Easy connection directly through the Ethernet port of the converters;
- Possibility to decode M-Bus Wireless telegrams with encryption.

USE OF SCAN & DECODE FUNCTIONS:

- SCAN & DECODE M-BUS NETWORK – GENERAL SETTINGS:

In the main window of the "SCAN & DECODE" section (Fig. 1), it is possible to select the type of connection (M-Bus or M-Bus Wireless) and define the general parameters of the bus.

The software will connect directly to the Ethernet port of the converters and it will start the operations for the scanning.



The screenshot shows the 'SCAN & DECODE' software window with the following settings:

- Scan Method:** M-Bus Wired
- Scan By:** Primary Address
- Select Hardware Type:** Ethernet
- IP Address:** 192.168.0.10
- M-Bus Communication Parameters:**
 - Baudrate:** 2400
 - Parity:** EVEN
- Option for Scan:**
 - ☐ Send Application Reset
 - ☐ Send SND NKE
 - Cut After:** 3
- Start Scan:** A button with a play icon and the text 'Start Scan'.

Fig. 1: Main window for "SCAN & DECODE" functions

- SCAN & DECODE M-BUS NETWORK – SCANNING

By pressing the “**Start Scan**” button from the main window, the scanning will start (*Fig. 2*).

In case of M-Bus (wired), the converter will start to scan all the possible IDs and it will find the node present in the network.

In case of M-Bus Wireless, the converter will listen the network and it will display the M-Bus meters that are transmitting in the bus.

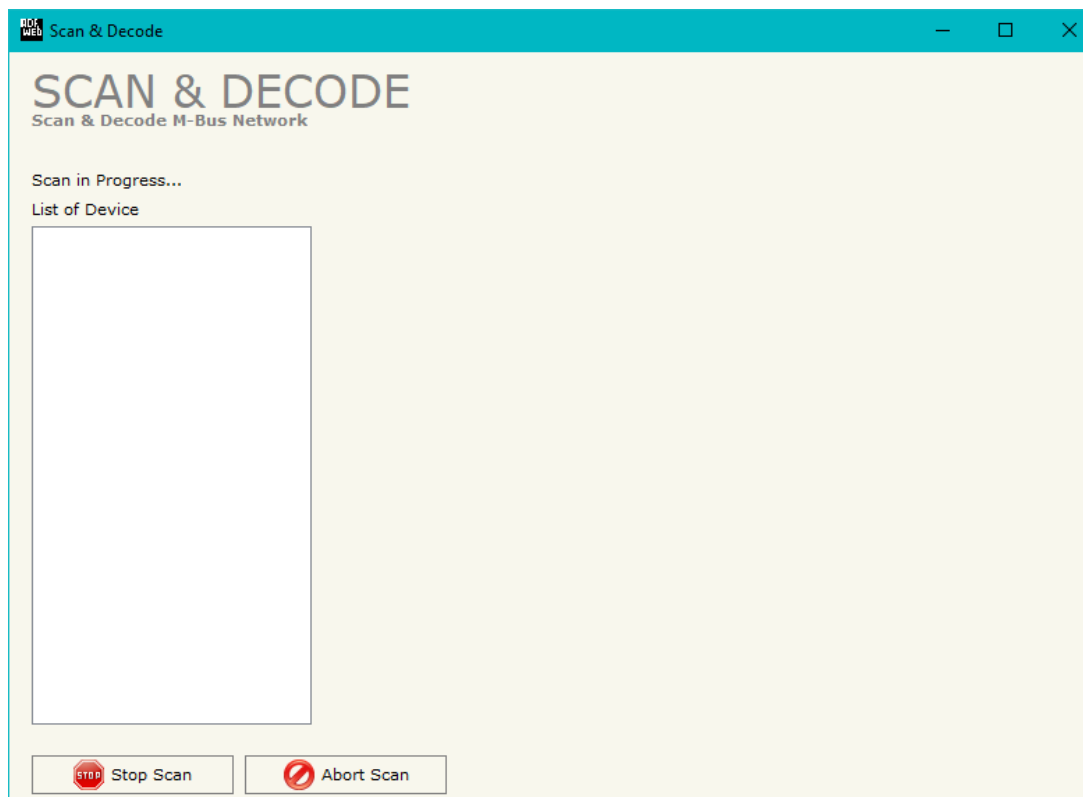


Fig. 2: "Scan in Progress..." window

- SCAN & DECODE M-BUS NETWORK – VARIABLE LIST

When the scanning is finished, it is possible to see the list of M-Bus or M-Bus Wireless nodes and the variables contained in the telegrams. It is possible to select the ones needed and import them inside the configuration project of the converter.

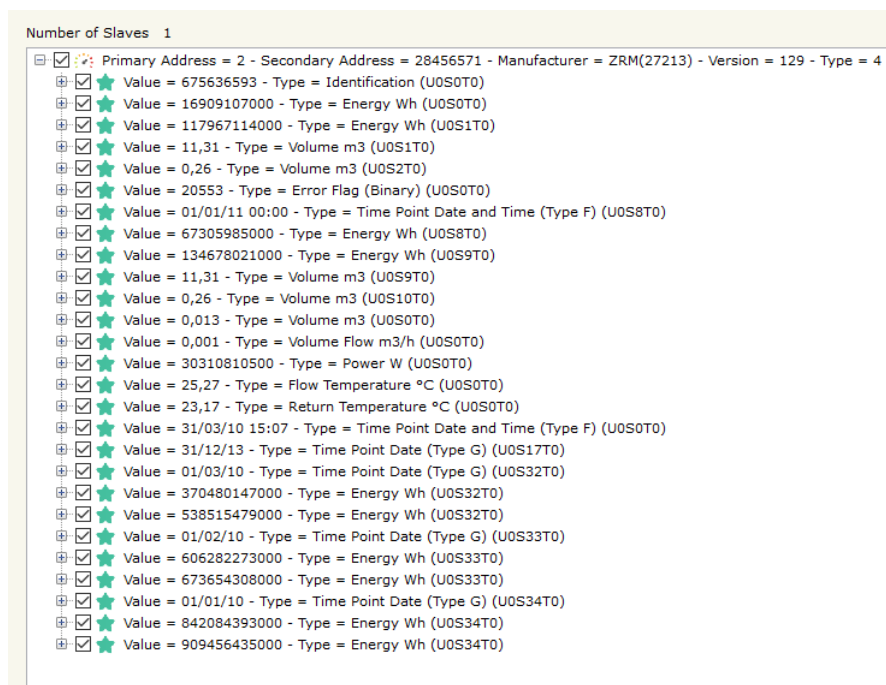


Fig. 3: "Variable list" window

WARRANTIES AND TECHNICAL SUPPORT:

For fast and easy technical support for your ADFweb.com SRL products, consult our internet support at www.adfweb.com. Otherwise contact us at the address support@adfweb.com

RETURN POLICY:

If while using your product you have any problem and you wish to exchange or repair it, please do the following:

- Obtain a Product Return Number (PRN) from our internet support at www.adfweb.com. Together with the request, you need to provide detailed information about the problem.
- Send the product to the address provided with the PRN, having prepaid the shipping costs (shipment costs billed to us will not be accepted).

If the product is within the warranty of twelve months, it will be repaired or exchanged and returned within three weeks. If the product is no longer under warranty, you will receive a repair estimate.



ADFweb.com S.r.l.

Via Strada Nuova, 17
IT-31010 Marenò di Piave
TREVISO (Italy)
Phone +39.0438.30.91.31
Fax +39.0438.49.20.99
www.adfweb.com

