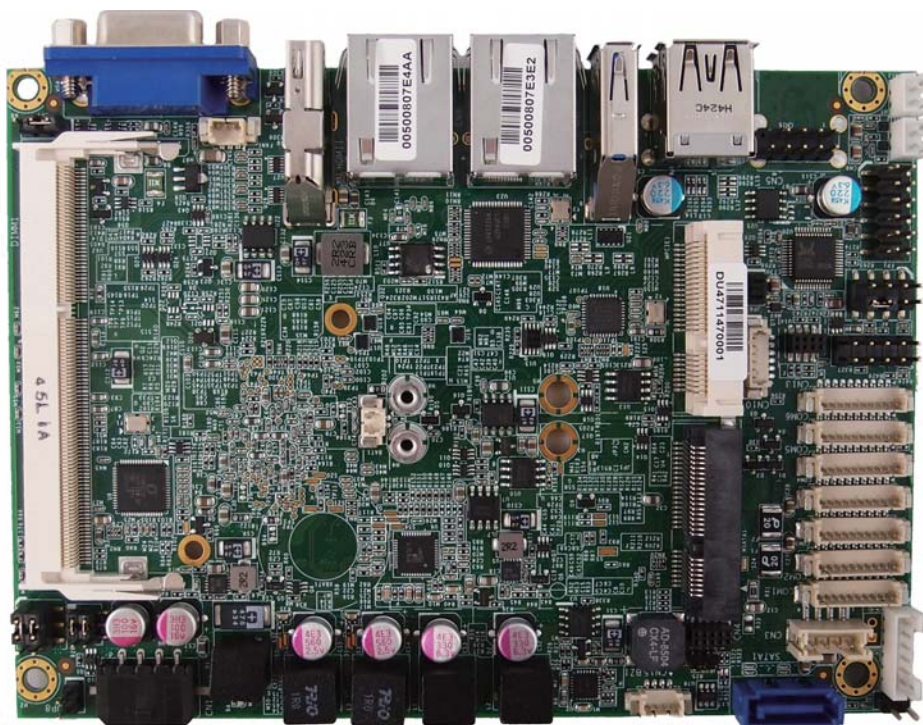


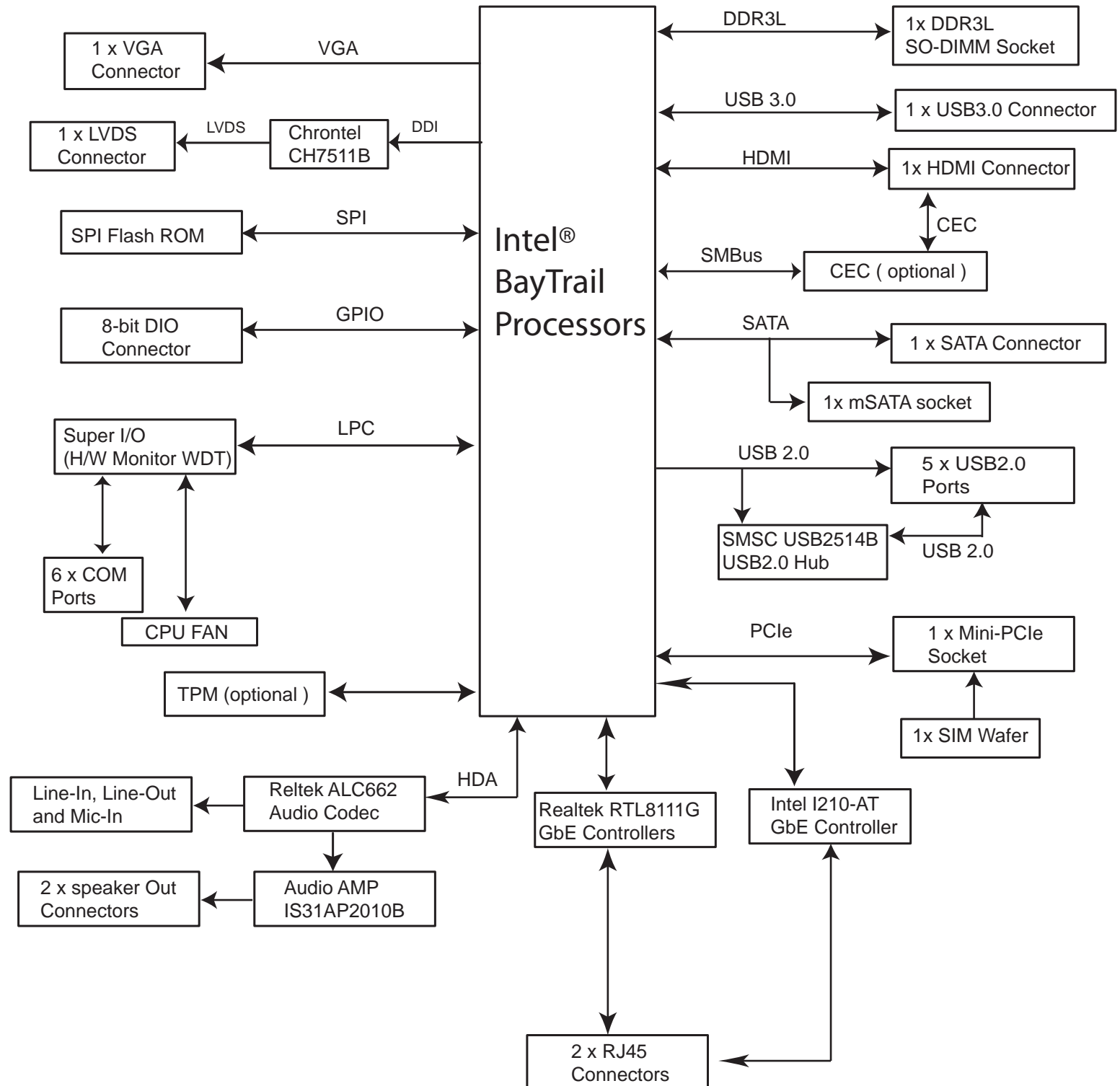
# KEEX-1760 Series

Intel® Embedded Compact Extended Form Factor with  
Intel® BayTrail Processors



- Intel® BayTrail Processors
- Intel® HD Graphics
- 1x DDR3L SODIMM up to 8/4GB
- 1x VGA, 1x HDMI, 2x GbE, 6x COM
- 5x USB 2.0, 1x USB 3.0 and Audio
- 1x Mini-PCIe socket, 1x mSATA socket and DIO
- Suitable for Fanless design

## Block Diagram

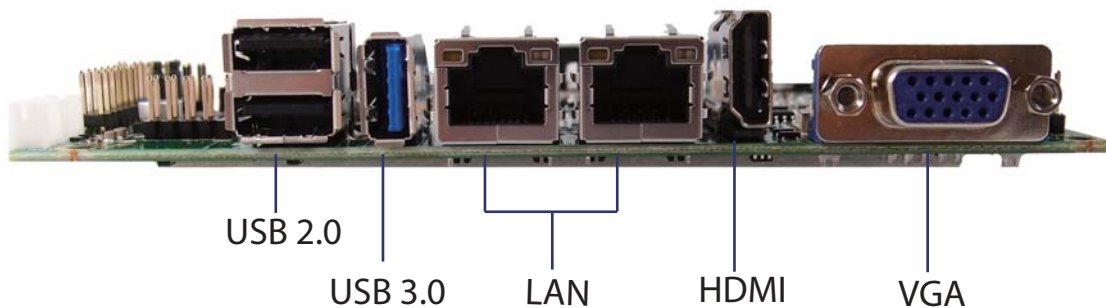


## Technical Information

<b>CPU Support</b>
Intel® BayTrail SoC Processors
<b>Memory</b>
1x DDR3L SO-DIMM up to 8/4 GB
<b>BIOS</b>
AMI uEFI BIOS 1x 64Mb SPI flash ROM
<b>Graphic</b>
Intel® HD Graphics
<b>Display</b>
Chrontel CH7511B DP-to-LVDS Converter onboard 1x SPWG connector for 24-bit/2-ch LVDS support 1x Wafer for Panel Power supply 1x HDMI connector 1x VGA connector
<b>LAN</b>
2x GbE LANs on rear I/O Intel I210-AT Ethernet Controller Realtek RTL8111G Ethernet Controller
<b>USB</b>
1x USB3.0 port on rear I/O 2x USB2.0 ports on rear I/O 3x USB2.0 port ( internal )
<b>Audio</b>
Realtek ALC662 Audio Codec onboard 1x header for Line-out/Line-In/MIC-In ISSI IS31AP2010B 3W Audio Amplifier onboard 2x Wafers for Stereo Speaker output
<b>Storage</b>
1x SATA Connector 1x wafer for SATA HDD Power supply 1x mSATA Socket
<b>Expansion Slot</b>
1x mPCIe Socket 1x SIM card wafer

<b>Watchdog Timer</b>
Programable WDT to generate System reset event
<b>Power</b>
ACPI 5.0 support 1x lockable Wafer for +12VDC Power input ATX/AT Mode Support
<b>MISC</b>
1x header for Reset button, HDD LED and External Speaker support 1x header for Power button, Power LED, Keyboard lock and SM bus 1x header for mPCIe activity LED support
<b>Super I/O</b>
Nuvoton NCT6106D Super IO 6x wafers for RS-232 COM ports support Pin-1 of Wafers provide +5VDC supply COM1 & COM2 support RS-232/422/485 1x wafer for +5VDC Smart FAN support 1x wafer for PS/2 KB & MS support 8-bit programmable DIO
<b>Hardware Monitor</b>
Voltages monitoring Temperature monitoring
<b>Real Time Clock</b>
SoC intergrated RTC
<b>TPM</b>
Option Infineon SLB9635 for TPM support
<b>OS Support</b>
Windows 7, Windows 8, Linux
<b>Dimensions</b>
146x105 mm
<b>Environment</b>
Operation Temp: 0°C ~ 60°C Storage Temp.: -40°C ~ 85°C Humidity: 0% - 95%
<b>Certifications</b>
CE, FCC Class A

## KEEX-1760 Rear I/O



## Ordering Information

Article	Description
KEEX-1760 (Default)	Embedded CPU Board, Intel® Celeron® BayTrail Quad Core J1900 Processor, 1x DDR3L SODIMM up to 8GB, 2 x GbE LANs, DIO, 1x mini-PCle, 6 x COMs, 1x VGA, 1x HDMI, 5x USB 2.0, and 1x USB 3.0
KEEX-1761*	Embedded CPU Board, Intel® Atom™ BayTrail Quad Core E3845 Processor, 1x DDR3L SODIMM up to 8GB, 2 x GbE LANs, DIO, 1 x mini-PCle, 6 x COMs, 1x VGA, 1x HDMI, 5x USB 2.0, and 1x USB 3.0
KEEX-1762*	Embedded CPU Board, Intel® Atom™ BayTrail Dual Core E3825 Processor, 1x DDR3L SODIMM up to 8GB, 2 x GbE LANs, DIO, 1x mini-PCle, 6 x COMs, 1x VGA, 1x HDMI, 5x USB 2.0, and 1x USB 3.0
KEEX-1763*	Embedded CPU Board, Intel® Atom™ BayTrail Dual Core N2807 Processor, 1x DDR3L SODIMM up to 4GB, 2 x GbE LANs, DIO, 1x mini-PCle, 6 x COMs, 1x VGA, 1x HDMI, 5x USB 2.0, and 1x USB 3.0

\* By project