

# Explosion Proof Non Contact Safety Interlock Switches

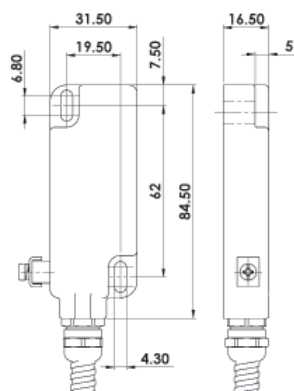


## WM1-Ex STAINLESS STEEL 316 (supplied fitted with Stainless Steel Flexible Conduit)

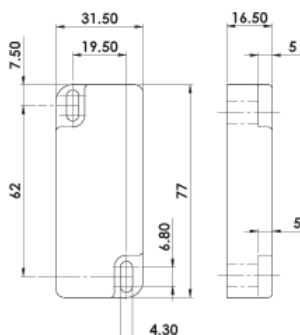
**Ex** II 1G Ex ma IIC T6 Ga

**Ex** II ID Ex ma IIIC T80 Da IP67\*

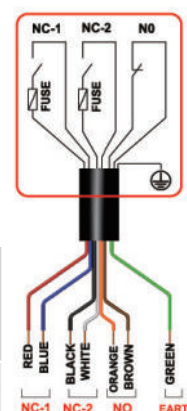
Zones 0, 20, 1, 21, 2, 22 Gas and Dust



SWITCH



ACTUATOR



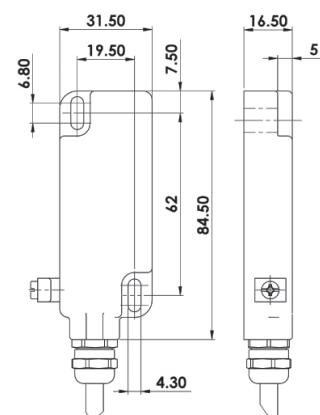
SALES NUMBER	TYPE ZONES 0,20	BODY HOUSING	CABLE/ CONDUIT LENGTH 10mm OD	CIRCUITS	ELECTRICAL RATING NORMALLY CLOSED CIRCUITS (Actuator Present) RED/BLUE NC1 WHITE/BLACK NC2	ELECTRICAL RATING NORMALLY OPEN CIRCUIT (Actuator Present) ORANGE/BROWN NO
900101	WM1-Ex	S/Steel	5M	2NC 1NO	230Vac/24Vdc 0.6A Max.	230Vac/24Vdc 200mA. Max.
900102	WM1-Ex	S/Steel	10M	2NC 1NO	INTERNALLY FUSED	

## WM2-Ex STAINLESS STEEL 316

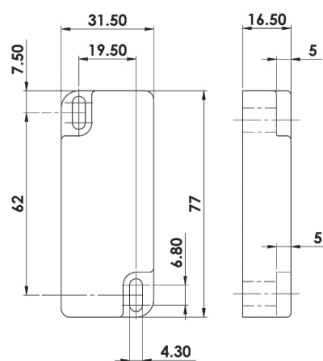
**Ex** II 2G Ex mb IIC T6 Gb

**Ex** II 2D Ex mb IIIC T80 Db IP67\*

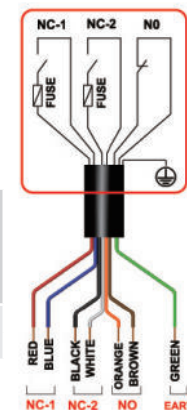
Zones 1, 21, 2, 22 Gas and Dust



SWITCH



ACTUATOR



SALES NUMBER	TYPE ZONES 1,21,2,22	BODY HOUSING	CABLE LENGTH 6mm OD	CIRCUITS	ELECTRICAL RATING NORMALLY CLOSED CIRCUITS (Actuator Present) RED/BLUE NC1 WHITE/BLACK NC2	ELECTRICAL RATING NORMALLY OPEN CIRCUITS (Actuator Present) ORANGE/BROWN NO
900201	WM2-Ex	S/Steel	5M	2NC 1NO	230Vac/24Vdc 2A Max.	230Vac/24Vdc 200mA. Max.
900202	WM2-Ex	S/Steel	10M	2NC 1NO	INTERNALLY FUSED	

\*Product is fully encapsulated which is considered to provide ingress protection to at least IP67.

# Explosion Proof Non Contact Safety Interlock Switches



## SUMMARY SPECIFICATION AND SELECTION GUIDE:

SWITCH TYPE	HOUSING MATERIAL	PART NUMBER SERIES	MAXIMUM CURRENT	ZONES
WM1-Ex	Stainless Steel 316 and fitted with Stainless Steel Flexible Conduit	9001.....	0.6A	Zone 0 Gas Zone 20 Dust (An area where Gas and Dust are continuously present)
WM2-Ex	Stainless Steel 316	9002.....	2.0A	Zone 1 Gas Zone 21 Dust Zone 2 Gas Zone 22 Dust (An area where Gas and Dust is likely to occur in use)
CM1-Ex	Stainless Steel 316	901.....	2.0A	
CM2-Ex	Stainless Steel 316	902.....	1.0A / 0.6A	
CM3-Ex	Stainless Steel 316	903.....	0.6A	
LM-Ex	Stainless Steel 316	904.....	0.6A	
RM-Ex	Stainless Steel 316	905.....	0.6A	

## TECHNICAL AND SAFETY SPECIFICATIONS:

**Standards:** IEC/EN60079-0 IEC/EN60079-18  
ISO14119 EN60947-5-3 EN60204-1  
ISO13849-1 EN62061

### Safety Classification and

### Reliability Data:

Mechanical Reliability B10d 3.3 x 10<sup>6</sup> operations at 100mA load  
ISO13849-1 Up to PLe depending upon system architecture  
Safety Data – Annual Usage 8 cycles per hour/24 hours per day/365 days  
MTTFd 470 years  
Contact Release Time <2ms  
Initial Contact Resistance <500 milliohm  
Minimum Switched Current 10Vdc 1mA  
Insulation Resistance 100 Mohms  
Recommended Setting Gap 5mm

Switching Distance Sao 10mm Close  
(Target to Time) Sar 22mm Open  
Approach Speed 200mm/m to 1000mm/s  
Temperature Range -20/+80 (or +60C for 2A version)  
Enclosure Protection IP67  
Shock Resistance IEC 68-2-27 11ms 30g  
Vibration Resistance IEC 68-2-6 10-55Hz 1mm  
Body Material Stainless Steel 316  
Cable Type 6mm OD  
Mounting Position Any  
Approval Body BASEEFA UK

**\*Product is fully encapsulated which is considered to provide ingress protection to at least IP67.**