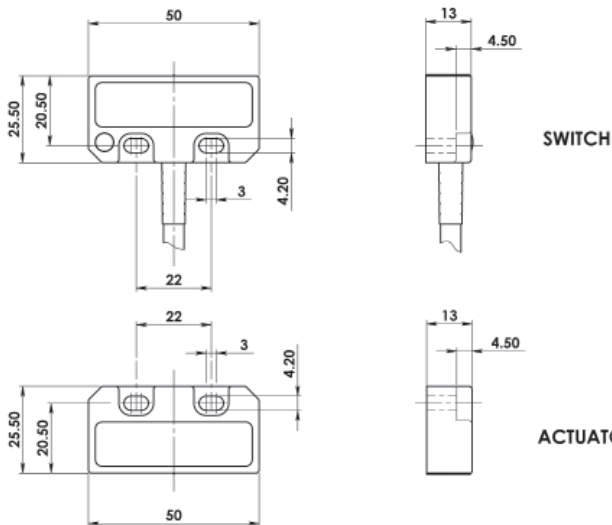


RFID Coded Non Contact Type: SPF

FEATURES:

Universal fitting - established 22mm footprint suitable for most applications
Withstands environments where high humidity or hose down is required
High specification and durable polyester housing
Wide 14mm sensing with high tolerance to misalignment
Up to: PLe ISO13849-1
2NC 1NO circuits - high switching life - no moving parts
Quick Connect versions available

DIMENSIONS:



RFID Coded Actuation

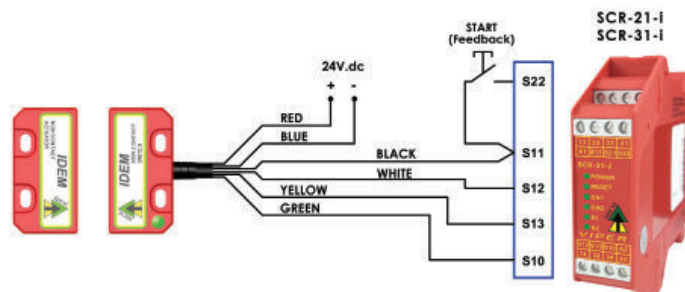
Switching Tolerance up to 14mm

Will operate with most Safety Relays

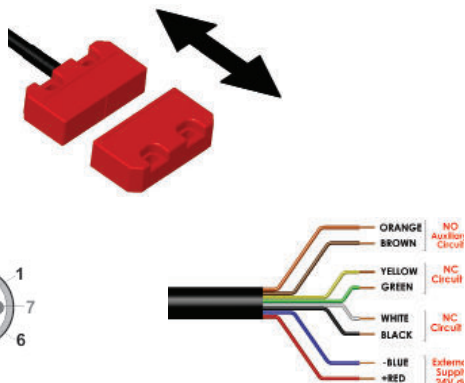
IP69K



CONNECTION EXAMPLE:



OPERATING DIRECTION:



Single switch connected to an SCR-21-i or SCR-31-i to give Dual Channel Monitoring with Manual Start.

Standards: ISO14119 EN60947-5-3 EN60204-1 ISO13849-1 EN62061 UL508

Safety Classification and Reliability Data:

Minimum switched current: 10V dc 1mA
Dielectric Withstand: 250V ac
Insulation Resistance: 100 Mohms
Recommended setting gap: 5mm
Switching Distance: Sao 8mm Close Sar 20mm Open
Tolerance to Misalignment: 5mm in any direction from 5mm setting gap
Switching frequency: 1.0 Hz maximum
Approach speed: 200mm/m to 1000mm/s
Body material: Polyester
Temperature Range: -25/80C
Enclosure Protection: IP67/IP69K
Cable Type: PVC 6 or 8 core 6mm OD Conductors 0.25mm²
Mounting Bolts: 2 x M4 Tightening torque 1.0 Nm
Mounting Position: Any

Characteristic Data according to IEC62061 (used as a sub system):

Safety Integrity Level SIL3
PFH (1/h) 4.77E-10 Corresponds to 4.8% of SIL3
PFD 4.18E-05 Corresponds to 4.2% of SIL3
Proof Test Interval T₁ 20a

Characteristic Data according to EN ISO13849-1:

Performance Level e If both channels are used in combination with a SIL3/PLc control device
Category Cat4
MTTFd 1100a
Diagnostic Coverage DC 99% (high)
Number of operating days per year: d_{op} = 365d
Number of operating hours per day: h_{op} = 24h
B10d not mechanical parts implemented

When the product is used deviant from these assumptions (different load, operating frequency, etc.) the values have to be adjusted accordingly.

Quick Connect QC M12 8 Way Male Plug Pin view from Switch	Flying Lead Colour	Circuit (Actuator Present)	Output Types Solid State
8	Orange	Auxiliary NO	200mA Max. 24Vdc
5	Brown	Auxiliary NO	200mA Max. 24Vdc
4	Yellow	Safety NC2	200mA Max. 24Vdc
6	Green	Safety NC2	200mA Max. 24Vdc
7	Black	Safety NC1	200mA Max. 24Vdc
1	White	Safety NC1	200mA Max. 24Vdc
2	Red	Supply +24Vdc	Supply 24Vdc +/- 10%
3	Blue	Supply 0Vdc	

SALES NUMBER	MASTER CODED (same code every switch)	CABLE LENGTH
405101	SPF-M-RFID	2M
405102	SPF-M-RFID	5M
405103	SPF-M-RFID	10M
405104	SPF-M-RFID	QC-M12
405201	Replacement Actuator Master Coded	

SALES NUMBER	UNIQUELY CODED (every switch unique activation)	CABLE LENGTH
405001	SPF-U-RFID	2M
405002	SPF-U-RFID	5M
405003	SPF-U-RFID	10M
405004	SPF-U-RFID	QC-M12

For all IDEM switches the normally closed (NC) circuits are closed when the guard is closed and the actuator is present.

140101	Female QC Lead	M12 Female 5m. 8 way
140102	Female QC Lead	M12 Female 10m. 8 way