

Gateway brings data from DLMS protocol(IEC 62056) to MODBUS TCP/RTU



DLMS-MODBUS ADVANCED GATEWAY



Landis+Gyr
Elster
CewePrometer
ISKRA
Actaris
EMH
DPE
.....

Gateway is able to communicate with energy meters that implement IEC-62056, -21, -42, -43, -61, -53, -46 standards.

Gateway to read data on energy meters with DLMS protocol.

DIN RAIL mount

Istantaneous conversion read data to Modbus TCP or RTU.

The gateway reads all energy meters on the market (Landis+ Gyr, Iskra, Actaris, Itron, EMH....) with DLMS protocol.

Features

- Simple and fast configuration by VNC connection and specific configurator in the gateway
- Available DLMS communication by RS232 protocol, RS485 protocol, Ethernet port
- Modbus Map configurable by user selecting OBIS to bring on MODBUS
- MODBUS available on serial or Ethernet port
- Three different license: up to 10 energy meters, up to 25 energy meters, up to 50 energy meters, more on request



SPECIFICATION

Ethernet Interface: LAN 3 x 10/100/1000 Mbps

Serial Ports: 1 x RS-232, 1 x RS-422/RS-485

Power Input Voltage: 12-24 VDC

Power Consumption: Typical 5.28 W, Max 8.16 W

Mechanical: Construction Aluminum housing with DIN RAIL

Dimensions: (W x H x D) 85 x 30 x 106 mm

Weight: 0.8 kg

Operating Temperature -5 ~ 40 °C

Storage Temperature -40 ~ 85 °C

Relative Humidity 95% @ 40° C (non-condensing)

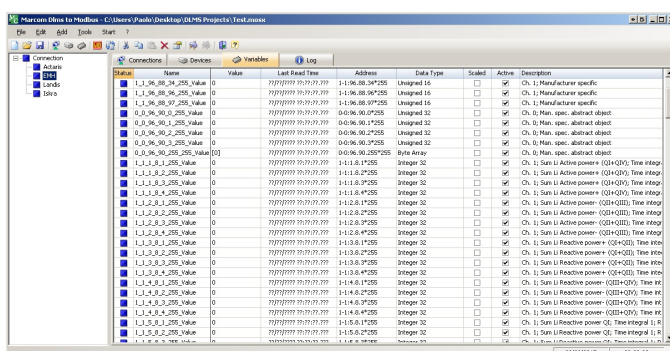
EMC: CE/FCC Class A, CCC, BSMI

Safety Certifications: UL, CCC, BSMI, CB

EASY CONFIGURATION

Multiple Connections: Different type of connections supported (R485,RS232,Ethernet)

Automatic Variables Discovery: Possible to discover automatically all OBIS in configuration phase



ORDERING INFORMATION

GWA-DLMS-10: License up to 10 Energy Meters, 1-port RS232, 1-port RS485, 1 port Ethernet

GWA-DLMS-25: License up to 25 Energy Meters, 1-port RS232, 1-port RS485, 1 port Ethernet

GWA-DLMS-50: License up to 50 Energy Meters, 1-port RS232, 1-port RS485, 1 port Ethernet

> 50 Meters: On request

Optional Accessories (purchased separately)

TCC-100I: RS-232 to RS-422/485 converter with optical isolation, -20 to 60°C

TCC-120I: RS-422/485 converter/repeater with 2 kV optical isolation

KMK114: Optical probe with RS485 connection (3,3-12 Volt external power supply requested)

PACKAGE CONTENT

- Gateway GWA-DLMS
- Documentation and software CD
- Quick Installation Guide

GATEWAY DEFAULT PARAMETERS

LAN IP: 192.168.212.239 /24
Access via U-VNC with password: Admin
OS username: Admin / password: Admin