

Analyzer/Scanner/Sniffer M-Bus

HD67031-B2 Serie - Available in 3 versions: 20-80-250 slaves

HD67031-B2 Serie:

Produced by ADFweb.com, it is a software tool and a master M-bus used to analyze the M-Bus protocol, or for scanning of M-bus nets or for the reading and setup of M-bus counters.

M-Bus:

Is a specific protocol used for the reading of Energy, hot and cold water, gas, pressure, etc. ... of counters and totalizers.

Usually the M-Bus uses a specific physical connection (Physical Layer), but in some cases it uses a RS232 or RS485 [see [HD67055](#)].

Analyzer/Scanner/Sniffer M-Bus HD67031-B2

Several are the functions of the software tools, Analyzer/Scanner/Sniffer M-Bus:

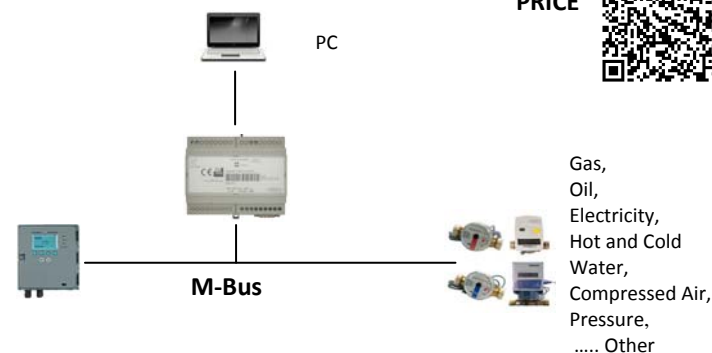
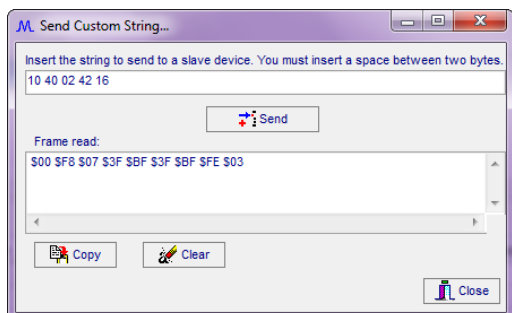
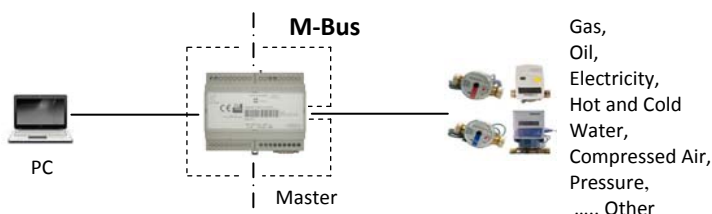
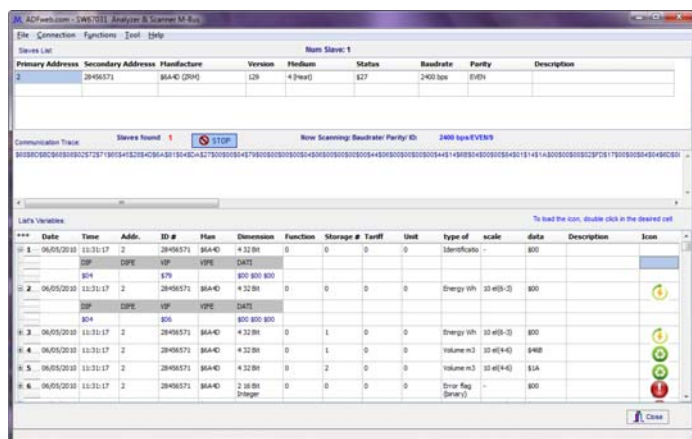
- Like Scanner, is used to read all the information of the slaves devices connected to the M-bus network. And it is used to startup any M-bus network.

- Like Analyzer, is used to decipher the protocol and make the data completely readable.

- Like Sniffer, is used to observed the communication among a M-Bus master and the related slaves.

Moreover, the tool allows to create in automatic the configuration for the other sets of product M-Bus produced by ADFweb.com (like protocol converter from M-bus an another bus).

- European standard EN 1434
- Creation of configuration file for Protocol Converter



Quick
PRICE



Gas,
Oil,
Electricity,
Hot and Cold
Water,
Compressed Air,
Pressure,
..... Other

Order Code	HD67031-B2-20	HD67031-B2-80	HD67031-B2-80	HD67031-B2-160	HD67031-B2-250
Technical data:	Master for 20 slaves	Master for 80 slaves	Master for 80 slaves	Master for 160 slaves	Master for 250 slaves
Operating voltage:	18V .. 35V DC 15V .. 21V AC	18V .. 35V DC 15V .. 21V AC	18V .. 35V DC 15V .. 21V AC	18V .. 35V DC 15V .. 21V AC	18V .. 35V DC 15V .. 21V AC
Consumption single slave:	1,5 mA	1,5 mA	1,5 mA	1,5 mA	1,5 mA
Min / Max-load consumption:	3,5W / 4W	3,5W / 8W	3,5W / 8W	3,5W / 8W	3,5W / 30 W
M-Bus voltage (without load):	38V	38V	38V	38V	38V
Max. M-Bus quiescent current:	30mA (20 unit loads)	120mA (80 unit loads)	120mA (80 unit loads)	120mA (80 unit loads)	375mA (250 unit loads)
Overcurrent threshold:	250mA	250mA	250mA	250mA	500mA
Transmission speed M-Bus:	300 .. 38.400 baud	300 .. 38.400 baud	300 .. 38.400 baud	300 .. 38.400 baud	300 .. 38.400 baud
Galvanic Isolation to M-Bus	yes	yes	yes	yes	yes
Temperature range °C / °F:	-40/+70°C [-40/+158°F]	-40/+70°C [-40/+158°F]	-40/+70°C [-40/+158°F]	-40/+70°C [-40/+158°F]	-40/+70°C [-40/+158°F]
Dimensions DxWxH	106x60x95 mm	106x60x95 mm	106x60x95 mm	106x60x95 mm	106x75x95 mm



ADFweb.com srl
Strada Nuova, 17
31010 Marenco di Piave
Treviso — ITALY
www.adfweb.com

Tel. +39-0438-30.91.31
Fax +39-0438-49.20.99
Id. Tax IT-0385360262
info@adfweb.com

QR—quick response
(matrix code)
info Analyzer/Scanner/Sniffer M-Bus
HD67031-B2 serie

